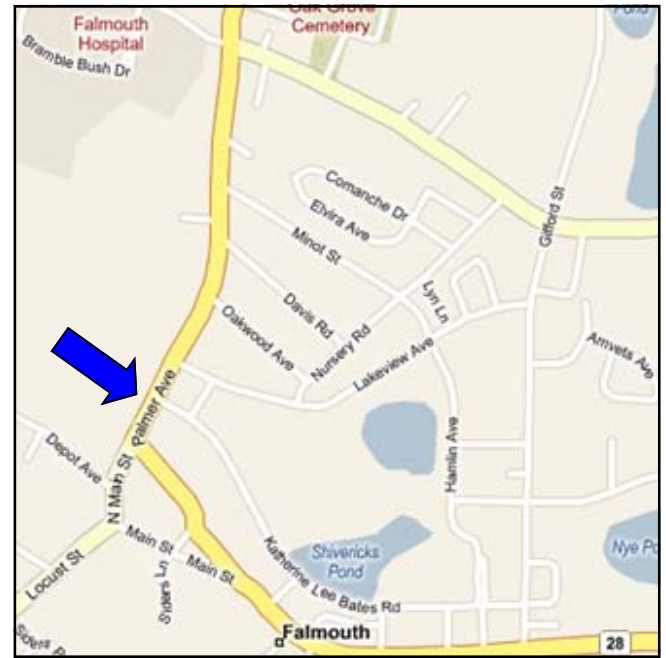


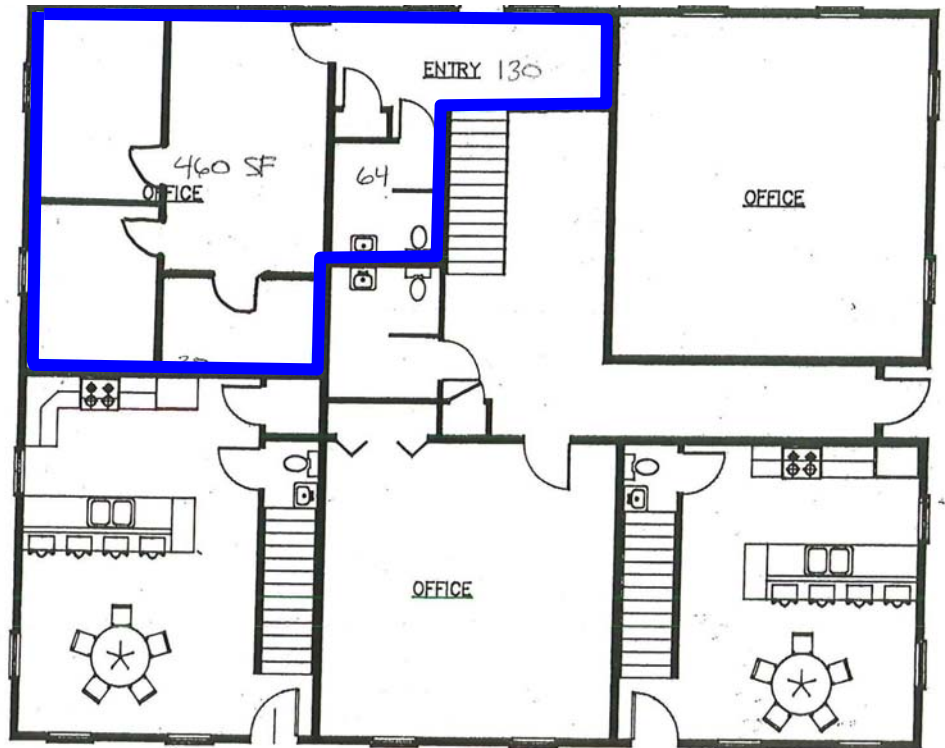
# Professional Office Space for Lease 143 Palmer Avenue, Falmouth

Commercial  
**Realty Advisors**



- 650 SQUARE FOOT BEAUTIFUL PROFESSIONAL OFFICE AT ONE OF FALMOUTH'S MOST VISIBLE AND DESIRABLE LOCATIONS.
- STEPS AWAY FROM BANKS, POST OFFICE, AND DOWNTOWN.
- WELL MAINTAINED BUILDING & BEAUTIFULLY LANDSCAPED GROUNDS
- AMPLE SIZED WELL-LIT PARKING AREA
- TWO HIGHLY VISIBLE ILLUMINATED SIGN LOCATIONS ARE PROVIDED ON ROUTE 28 & KATHERINE LEE BATES ROAD

Asking: \$850/Month Plus Electric



For more information about this opportunity contact:

**Bob White**

508.862.9000 Ext. 121  
Mobile: 508.335-2838  
bwhite@comrealty.net

**Commercial Realty Advisors, Inc.**

Real Estate Investment Brokerage Company

222 West Main Street  
Hyannis, Massachusetts 02601  
Tel: 508.862.9000  
Fax: 508.862.9200