

RETAIL/OFFICE SPACE FOR LEASE

MERCHANT'S WHARF, 80 DAVIS STRAITS, FALMOUTH MA

Commercial
Realty Advisors



PROPERTY HIGHLIGHTS:

- FORMER REGISTRY OF MOTOR VEHICLES SPACE
- HIGH END SPACE
- EXCELLENT PARKING
- HIGH VISIBILITY LOCATION
- LOCATED ON ROUTE 28, TEATICKET HIGHWAY

1,000-2,200 Square Feet Available

Asking \$14/SF (NNN)



For more information about this opportunity contact:

Thomas J. Sullivan

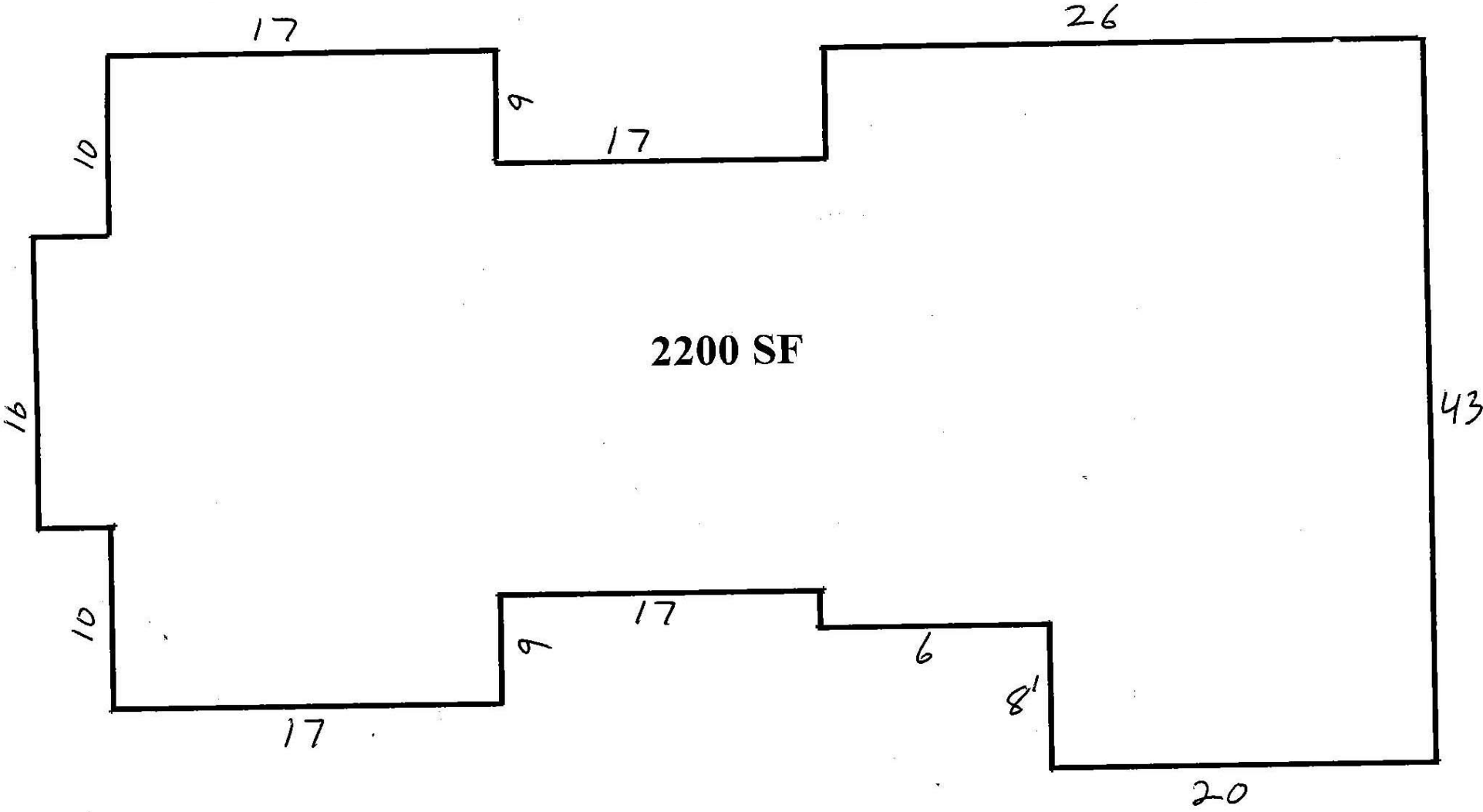
Mobile: 508.962.5075
508.862.9000 Ext. 104
tjs@comrealty.net

Commercial
Realty Advisors
www.comrealty.net

Commercial Realty Advisors, Inc.
Real Estate Investment Brokerage Company

222 West Main Street
Hyannis, Massachusetts 02601
Tel: 508.862.9000
Fax: 508.862.9200

MERCHANT'S WHARF, 80 DAVIS STRAITS, FALMOUTH MA



This information has been secured from sources we believe to be reliable, but we make no representation or warranties, expressed or implied, as to the accuracy of the information. Referenced square footage and acreage and sketched outlines of the property are approximate. Buyer must verify all the information and bears all the risk for any inaccuracies.