

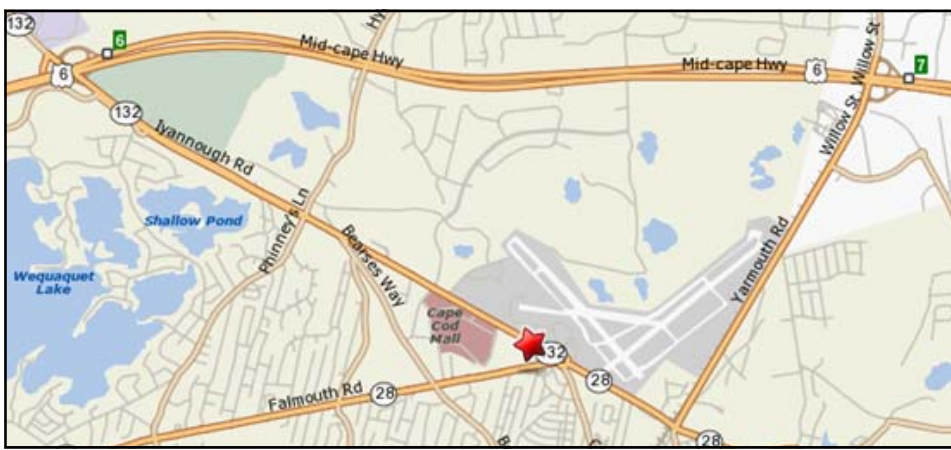
# PREMIER RETAIL SITE

## 624-640 ROUTE 132, HYANNIS, MA



### PROPERTY HIGHLIGHTS:

- 23,500 +/- SF WITH LOADING DOCK
- NEW CONSTRUCTION
- APPROVED CIRCUIT CITY SITE
- ECO-FRIENDLY SITE
- SUBSTANTIAL PARKING
- LOCATED ON HIGH TRAFFIC CORRIDOR



For more information about this opportunity contact:

**John E. Ciluzzi**

508.862.9000 Ext. 101  
jciluzzi@comrealty.net

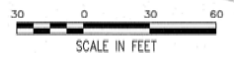
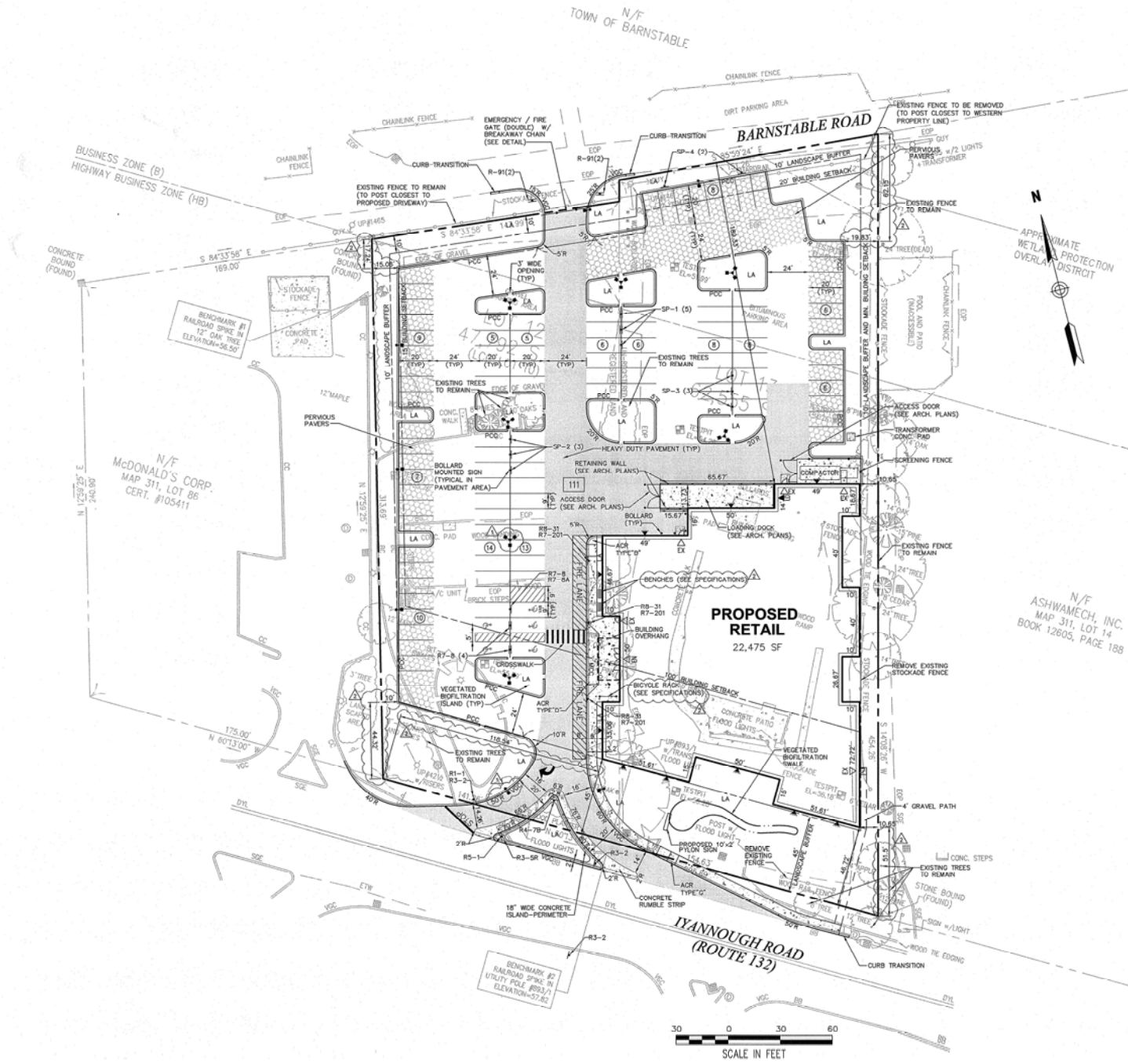


**Commercial Realty Advisors, Inc.**  
Real Estate Investment Brokerage Company

222 West Main Street  
Hyannis, Massachusetts 02601  
Tel: 508.862.9000  
Fax: 508.862.9200

This information has been secured from sources we believe to be reliable, but we make no representation or warranties, expressed or implied, as to the accuracy of the information. Referenced square footage and acreage and sketched outlines of the property are approximate. Buyer must verify all the information and bears all the risk for any inaccuracies.





This information has been secured from sources we believe to be reliable, but we make no representation or warranties, expressed or implied, as to the accuracy of the information. Referenced square footage and acreage and sketched outlines of the property are approximate. Buyer must verify all the information and bears all the risk for any inaccuracies.