

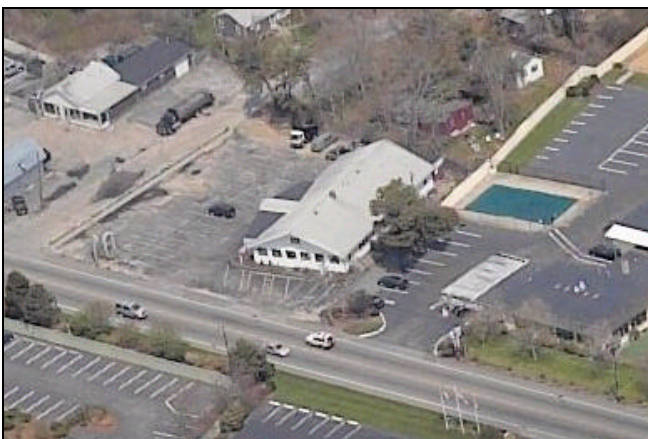
Prime Retail Space

Route 28 West Yarmouth, MA



PROPERTY HIGHLIGHTS:

- + 4,800 SQUARE FEET
- HIGH VISIBILITY
- AMPLE PARKING
- CLOSE PROXIMITY TO HYANNIS LINE
- ESTIMATED REAL ESTATE TAX \$2,287.98 (2005)



Asking \$875,000

For more information about this opportunity please contact Commercial Realty Advisors, Inc.

Commercial Realty Advisors, Inc.
Real Estate Investment Brokerage Company

*1600 Falmouth Road, Suite 40
Centerville, Massachusetts 02632
Tel: 508-862-9000
Fax: 508-862-9200*

www.comrealty.net