

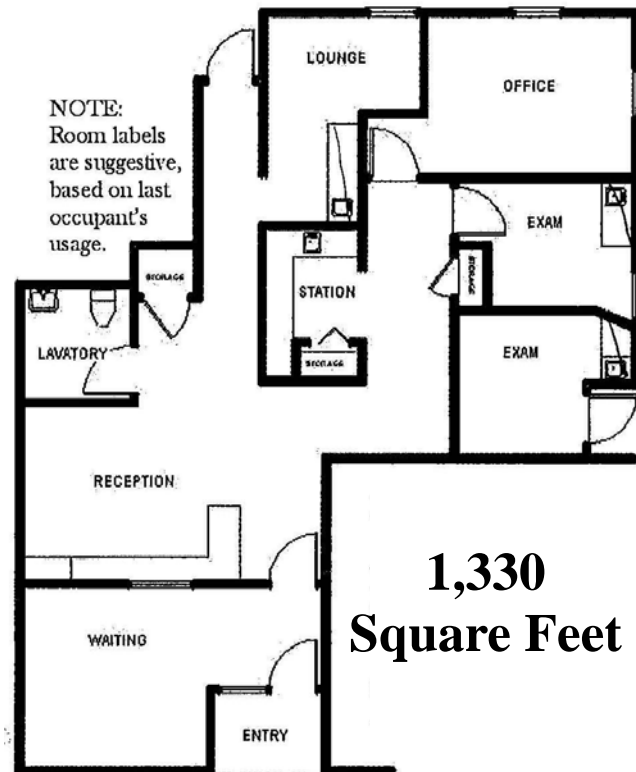
Professional Office Space for Lease 143 Palmer Avenue, Falmouth

Commercial
Realty Advisors



- 1,330 SQUARE FOOT BEAUTIFUL PROFESSIONAL OFFICE AT ONE OF FALMOUTH'S MOST VISIBLE AND DESIRABLE LOCATIONS.
- STEPS AWAY FROM BANKS, POST OFFICE, AND DOWNTOWN.
- WELL MAINTAINED BUILDING & BEAUTIFULLY LANDSCAPED GROUNDS
- AMPLE SIZED WELL-LIT PARKING AREA
- TWO HIGHLY VISIBLE ILLUMINATED SIGN LOCATIONS ARE PROVIDED ON ROUTE 28 & KATHERINE LEE BATES ROAD.

Asking: \$1,595/Month Plus Utilities



For more information about this opportunity contact:

Bob White

508.862.9000 Ext. 121
Mobile: 508.335-2838
bwhite@comrealty.net

Commercial Realty Advisors, Inc.
Real Estate Investment Brokerage Company

222 West Main Street
Hyannis, Massachusetts 02601
Tel: 508.862.9000
Fax: 508.862.9200