

3,600+/- SQ FT COMMERCIAL CONDOMINIUM FOR SALE OR LEASE

10 JAN SEBASTIAN DRIVE, UNIT 1, SANDWICH, MA



PROPERTY HIGHLIGHTS:

- 3,600 Square Feet
- Radiant Gas Heat
- 14 Foot Overhead Door
- Additional 1,400-4,000 SF Office Space Available
- Approximately one mile from Route 6
- Five minutes from the Sagamore Bridge
- Easy access to lighted intersection at Route 130



ASKING:

\$10/SQUARE FOOT N-N-N (LEASE)

\$299,000 (SALE)

For more information about this opportunity contact:

Kevin Pepe

508.862.9000 Ext. 105

Mobile: 508.962.5022

kpepe@comrealty.net

Commercial
Realty Advisors
www.comrealty.net

Commercial Realty Advisors, Inc.

Real Estate Investment Brokerage Company

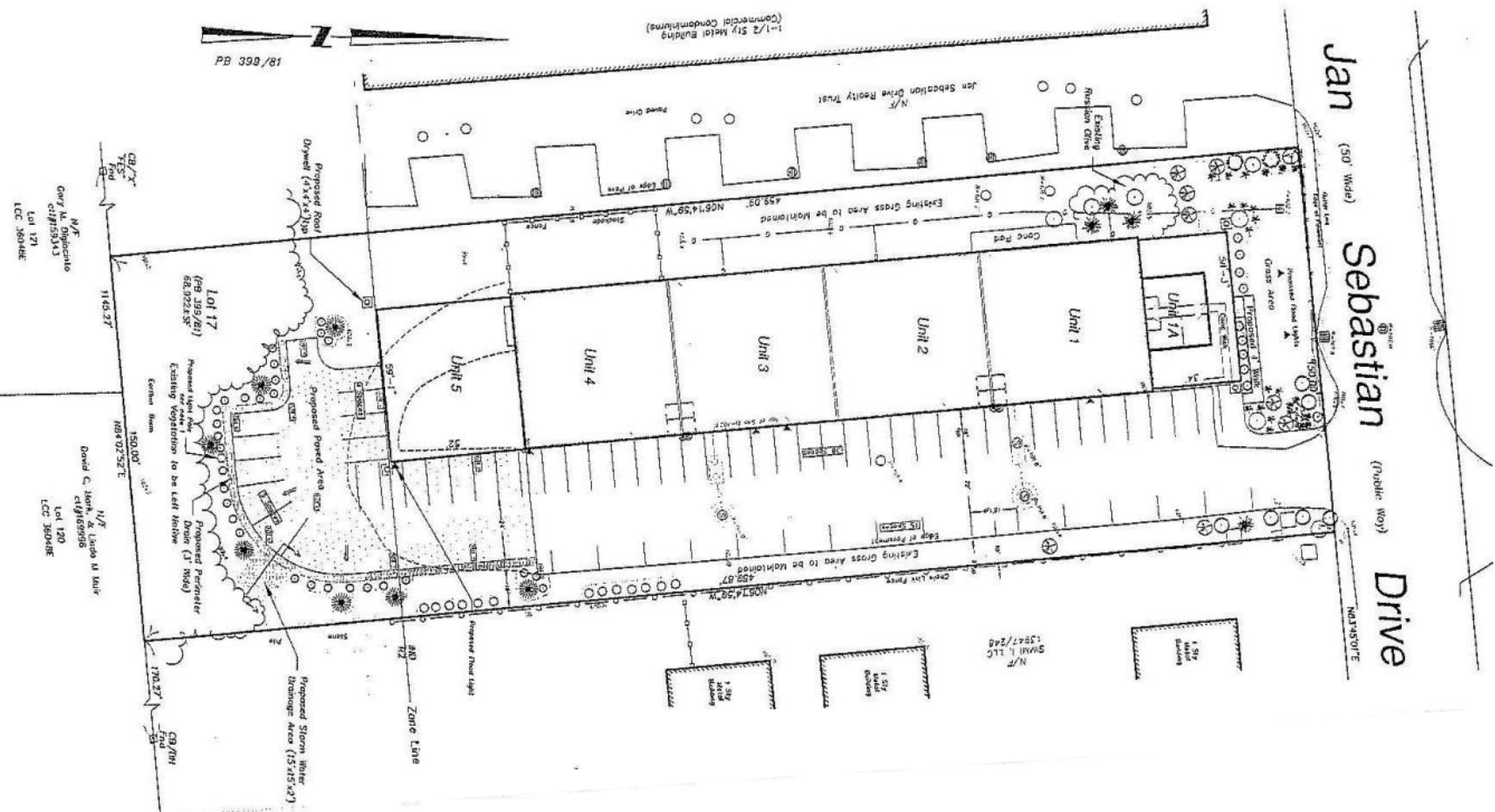
222 West Main Street

Hyannis, Massachusetts 02601

Tel: 508.862.9000

Fax: 508.862.9200

10 JAN SEBASTIAN DRIVE SITE PLAN



This information has been secured from sources we believe to be reliable, but we make no representation or warranties, expressed or implied, as to the accuracy of the information. Referenced square footage and acreage and sketched outlines of the property are approximate. Buyer must verify all the information and bears all the risk for any inaccuracies.