

For Lease : 972+/- Sq. Ft. Retail Condominium

68 Center Street, Hyannis, MA



- Excellent High-Visibility Location
- Municipal Sewer
- "HVB" Zoning District (Retail, Office, Studio-Gallery)
- Gas Heat, Central A/C
- Building built in 2007
- 2011 RE Taxes: \$2,058
- CAM Fee: \$264/Month

Offered at

\$1,300/Month + CAM

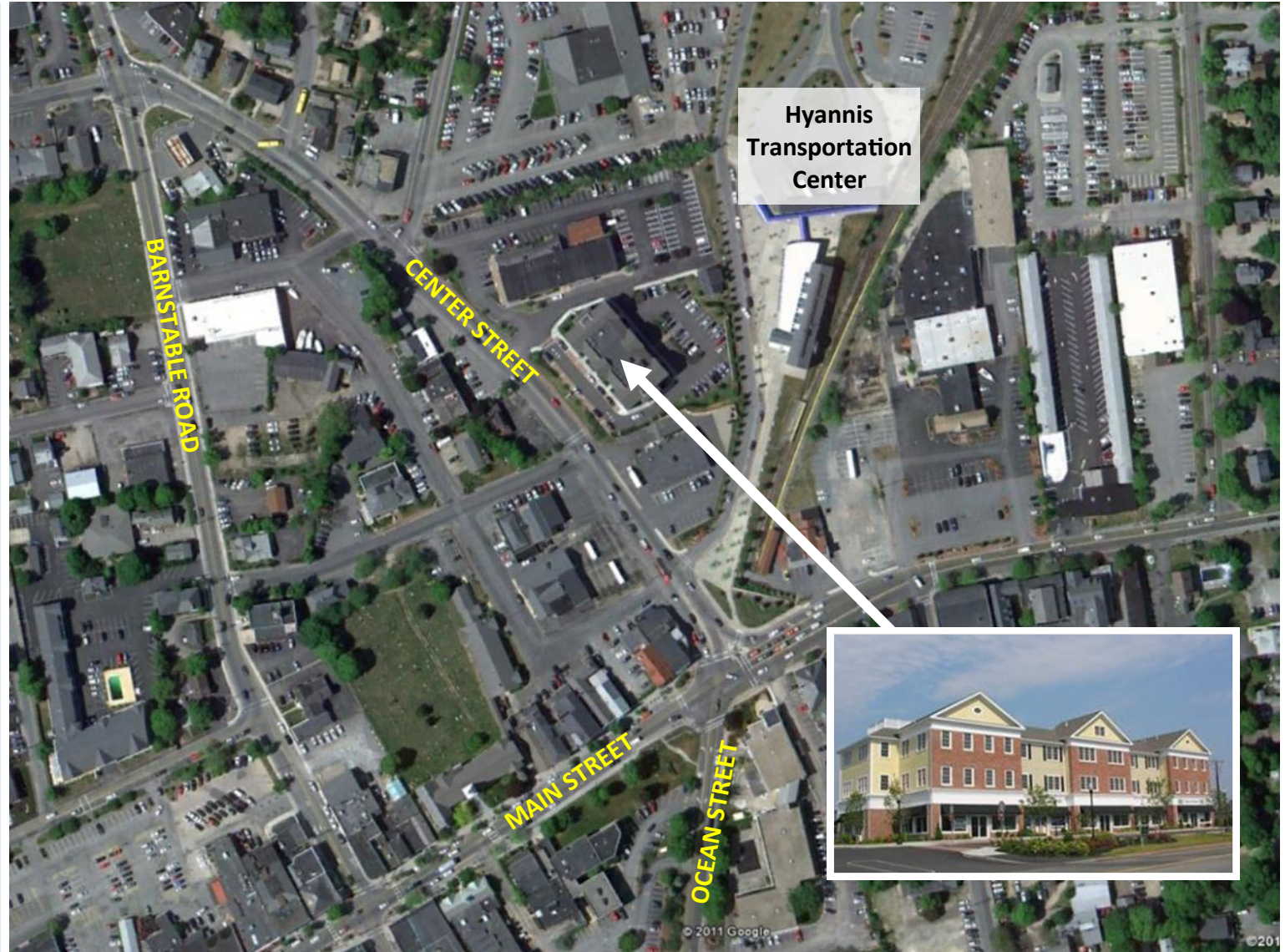
Commercial
Realty Advisors

Contact Kevin Pepe

**Commercial Realty
Advisors, Inc.**

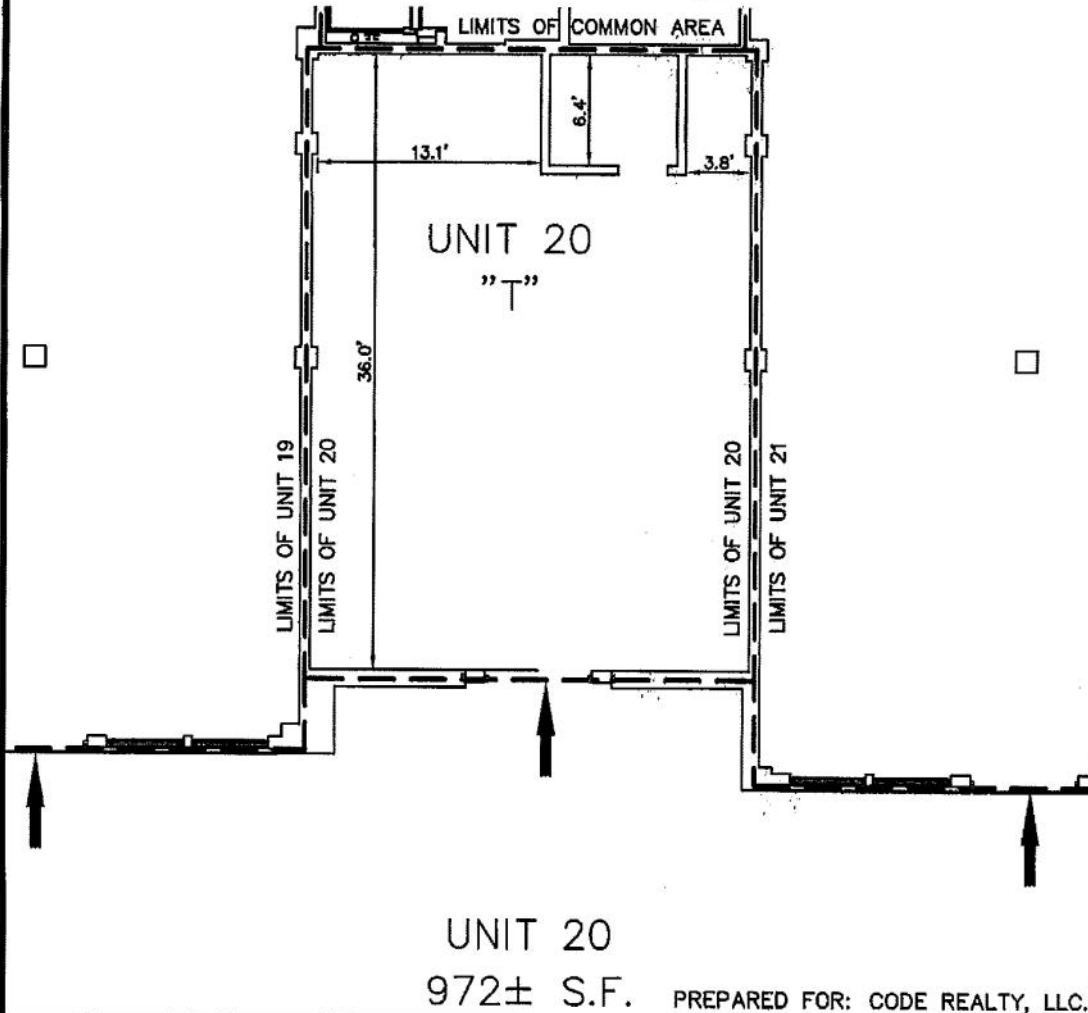
*Real Estate, Investment,
Brokerage Company*

222 West Main Street
Hyannis, MA 02601
508-862-9000 ext. 105
kpepe@comrealty.net
www.comrealty.net



This information has been secured from sources we believe to be reliable, but we make no representation or warranties, expressed or implied, as to the accuracy of the information. Referenced square footage and acreage and sketched outlines of the property are approximate. Buyer must verify all the information and bears all the risk for any inaccuracies. Brokers represent the Sellers of this project unless otherwise disclosed

I HEREBY CERTIFY THAT THIS PORTION OF THE PLANS FILED WITH THE MASTER DEED OF STONERIDGE CROSSING CONDOMINIUM SHOWS THE UNIT DESIGNATION OF THE UNIT BEING CONVEYED AND OF THE IMMEDIATELY ADJOINING UNITS, AND THAT IT FULLY DEPICTS THE LAYOUT OF THE UNIT, ITS LOCATION, DIMENSIONS, APPROXIMATE AREA, MAIN ENTRY, AS BUILT.



UNIT 20
 972± S.F. PREPARED FOR: CODE REALTY, LLC.

THE PURPOSE OF THIS DIAGRAM IS TO DEPICT EXISTING DIMENSIONS RELATIVE TO A CONDOMINIUM MASTER DEED.



Craig A. Field 6/11/07
 CRAIG A. FIELD, PLS DATE
 FOR THE BSC GROUP, INC.

THE BSC GROUP, INC
 349 MAIN ST. WEST YARMOUTH MA.

UNIT 20
 STONERIDGE
 CROSSING
 CONDOMINIUM
 68 CENTER STREET
 HYANNIS, MASSACHUSETTS

SCALE: 1"=8'
 DATE: 6/11/07
 BSC# 48856.01
 SHEET 1 OF 1