

3,200+/- Sq. Ft. INDUSTRIAL-COMMERCIAL BUILDINGS FOR SALE

12-(A&B) & 14-(A&B) JAN SEBASTIAN DRIVE, SANDWICH, MA



Also available:

- 12-A: 3,000+/- Sq. Ft. Available - Sale or Lease
- 12-B: 3,200+/- Sq. Ft. Occupied
- 14-A: 3,200+/- Sq. Ft. Available - Sale or Lease
- 14-B: 3,200+/- Sq. Ft. - Occupied

All units available for sale individually at \$309,000



PROPERTY HIGHLIGHTS:

- 3,200+/- Sq. Ft. Space
- Close proximity to Exit 2, Mid Cape Highway
- Lighted Intersection
- Industrial Zoning
- Condo Association being created

For more information about this opportunity contact:

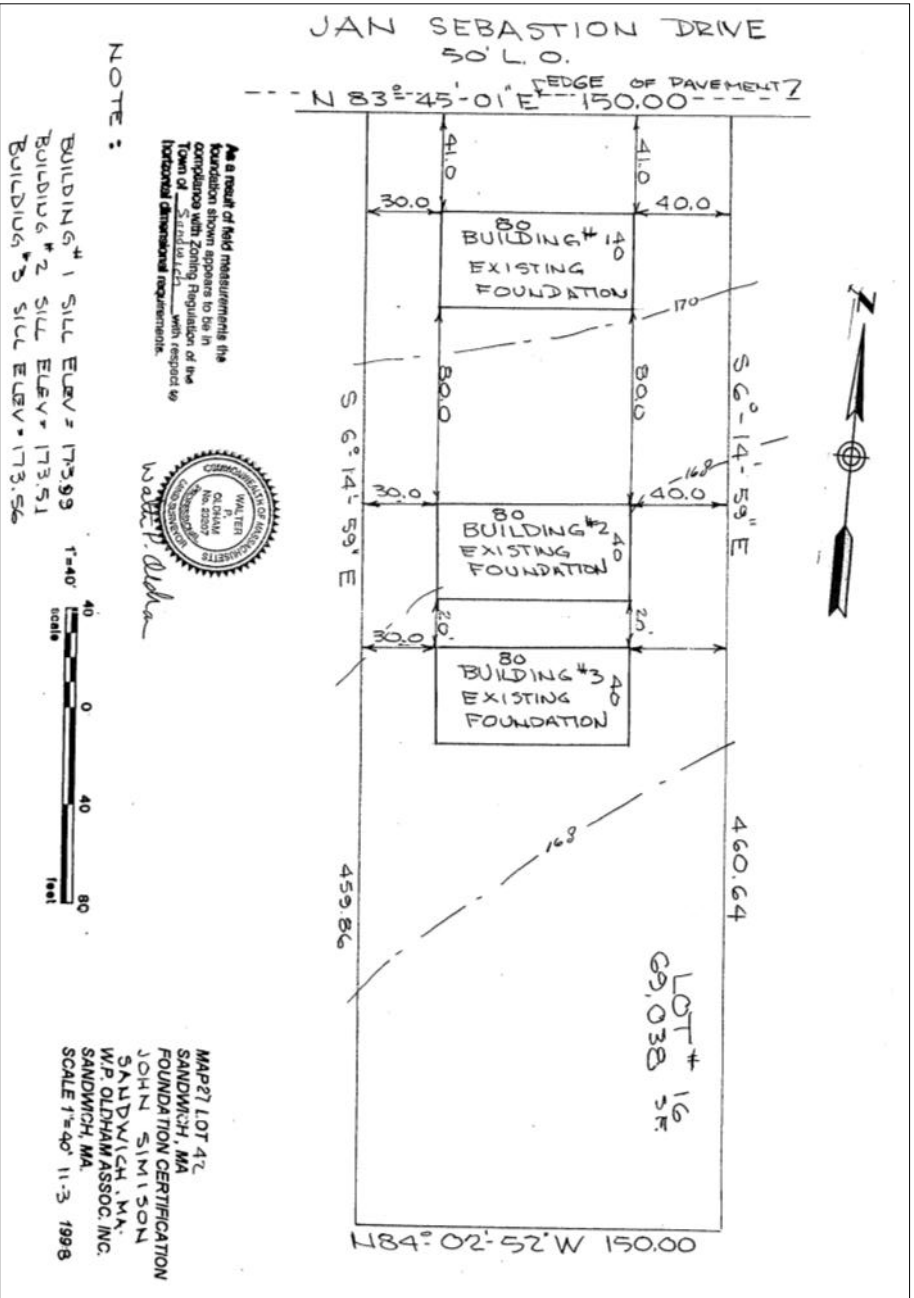
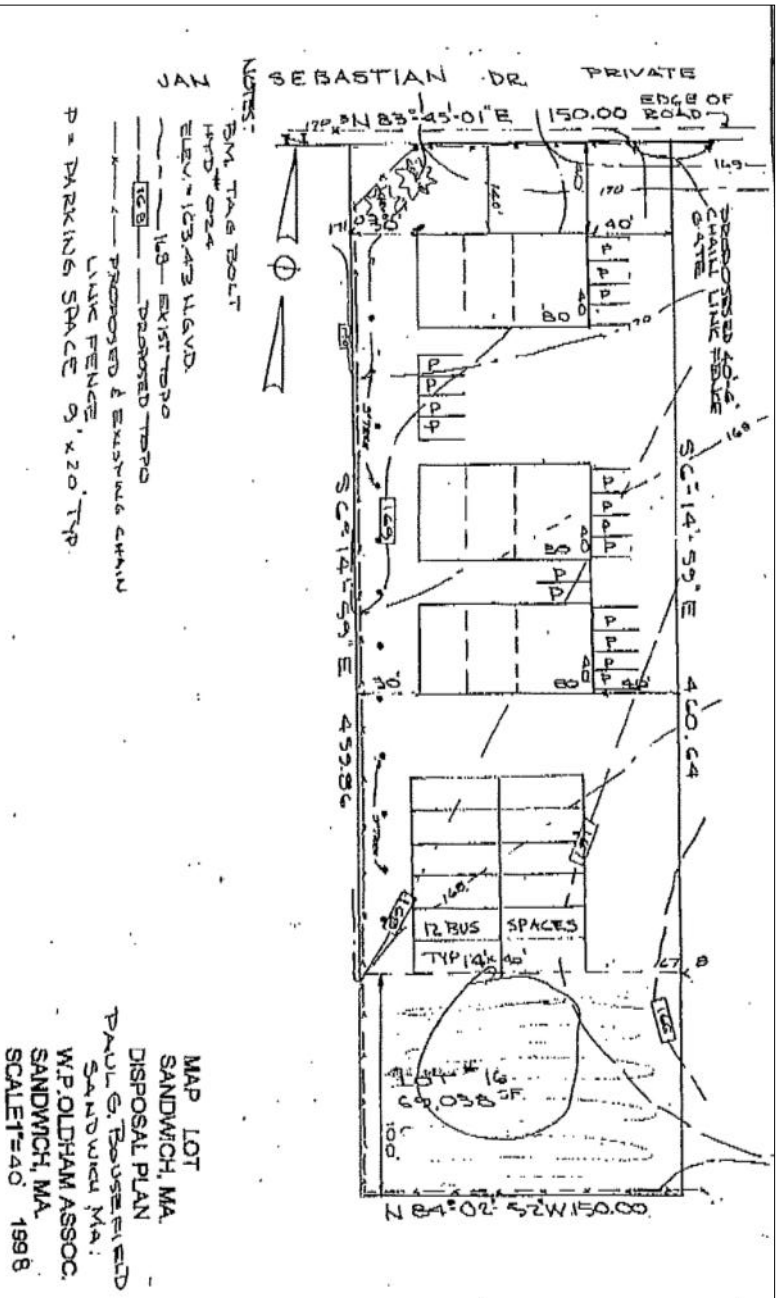
Kevin A. Pepe

508.862.9000 Ext. 105
Mobile: 508.962-5022
kpepe@comrealty.net

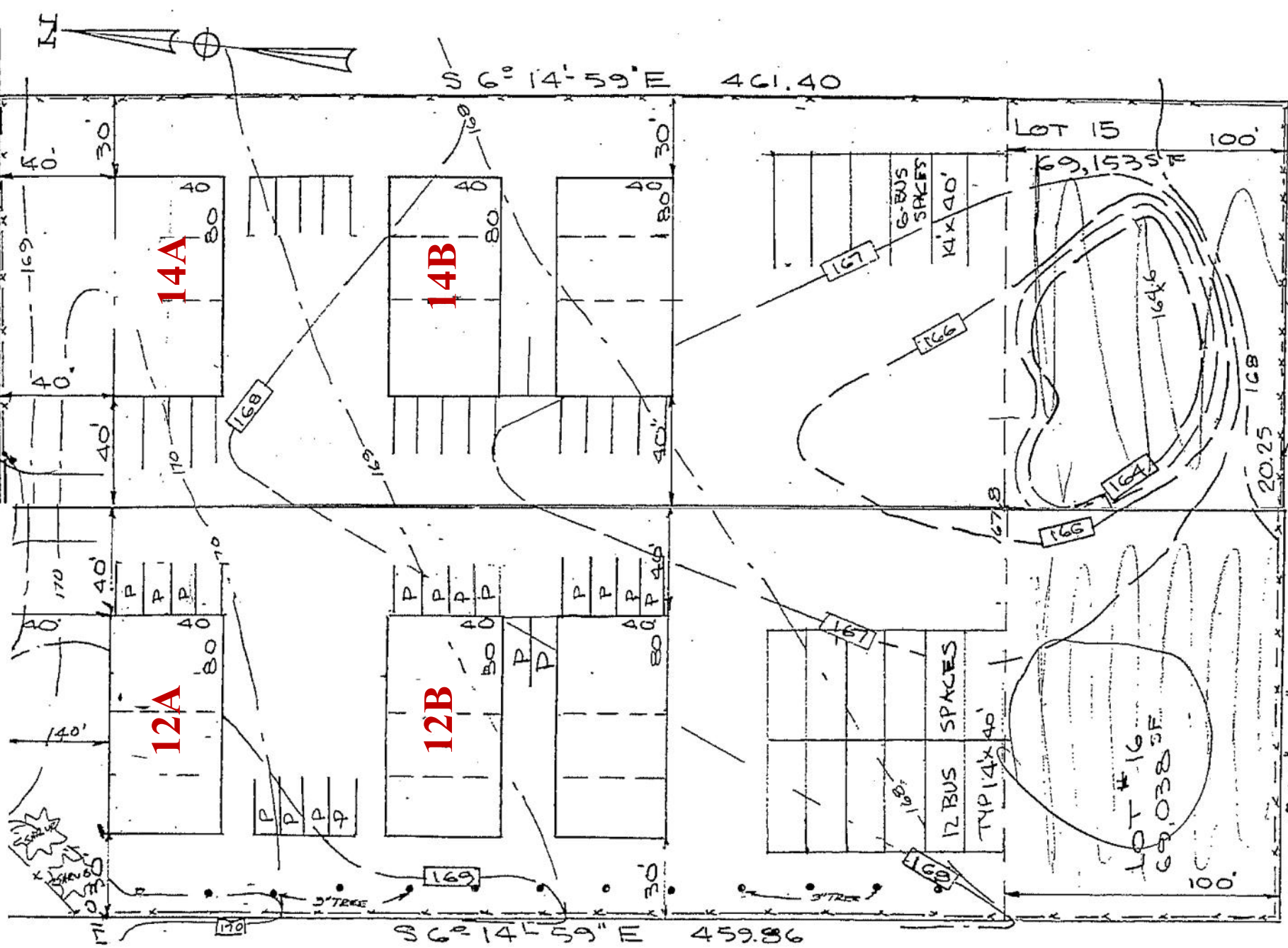
Commercial
Realty Advisors
www.comrealty.net

Commercial Realty Advisors, Inc.
Real Estate Investment Brokerage Company

222 West Main Street
Hyannis, Massachusetts 02601
Tel: 508.862.9000

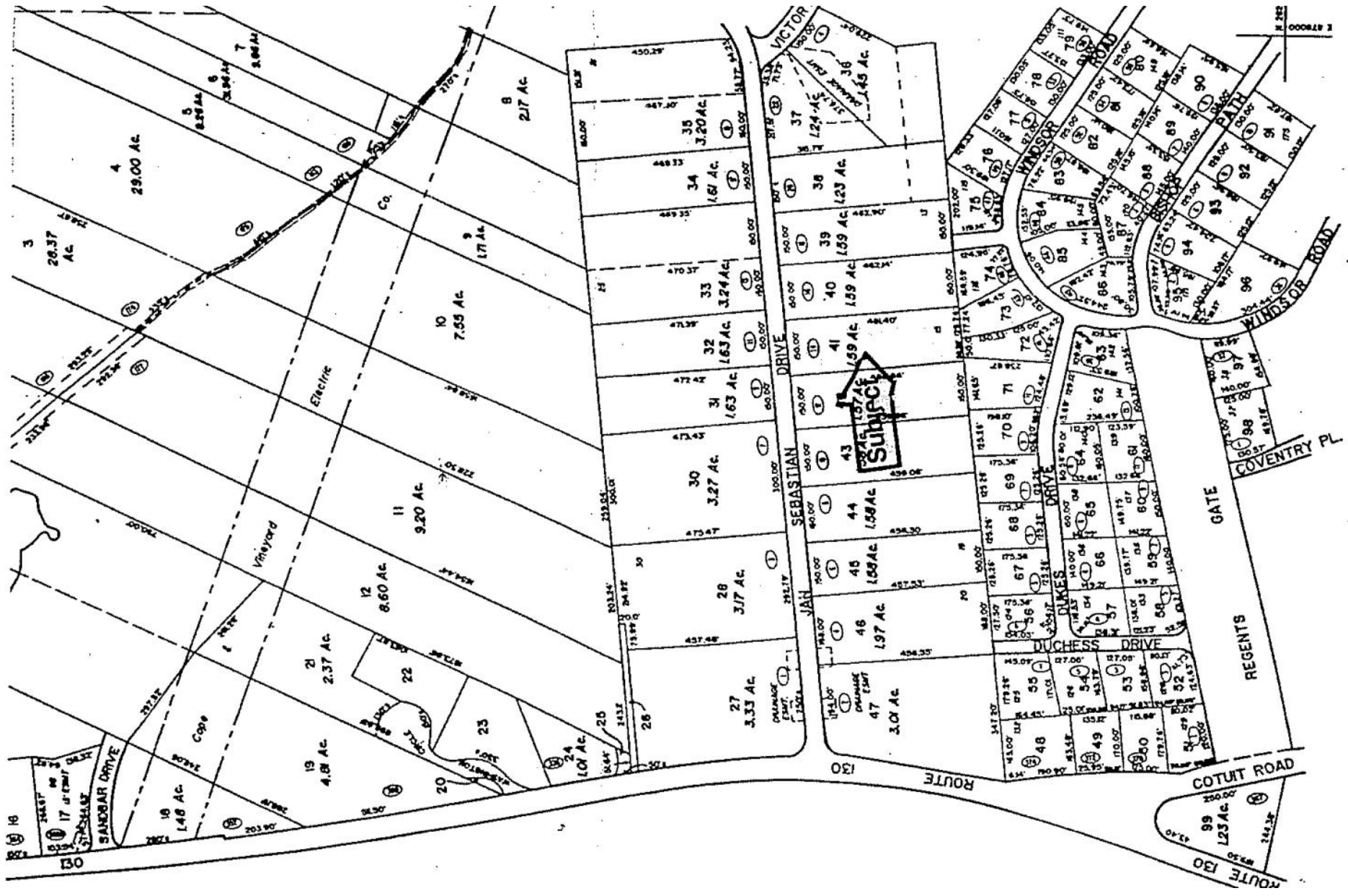


JAN SEBASTIAN DRIVE ← → EXIST. CB



$N 84^{\circ} 02' - W$
 $129.74'$
 $N 84^{\circ} 02' - W$

$N 84^{\circ} 02' - 52' W 150.00$



32	MAP NUMBER
27	
28	

TAX MAP
 TOWN OF SANDWICH
 BARNSTABLE COUNTY, MASSACHUSETTS