

# INDUSTRIAL SPACE FOR SALE OR LEASE

10 JAN SEBASTIAN DRIVE, UNIT 3, SANDWICH, MA

Scan here with your smartphone for more info...



## Property Highlights:

- One 12' x 14' overhead bay door.
- Additional mezzanine / office space on second level
- 3 assigned parking spaces + common parking areas.
- Approximately one mile from Route 6
- Minutes from the Sagamore Bridge
- Zoned Industrial
- 2011 Real Estate Taxes: \$3,629



**ASKING: \$224,900**



For more information about this opportunity contact:

**Kevin Pepe**

508.862.9000 Ext. 105  
Mobile: 508.962.5022  
kpepe@comrealty.net

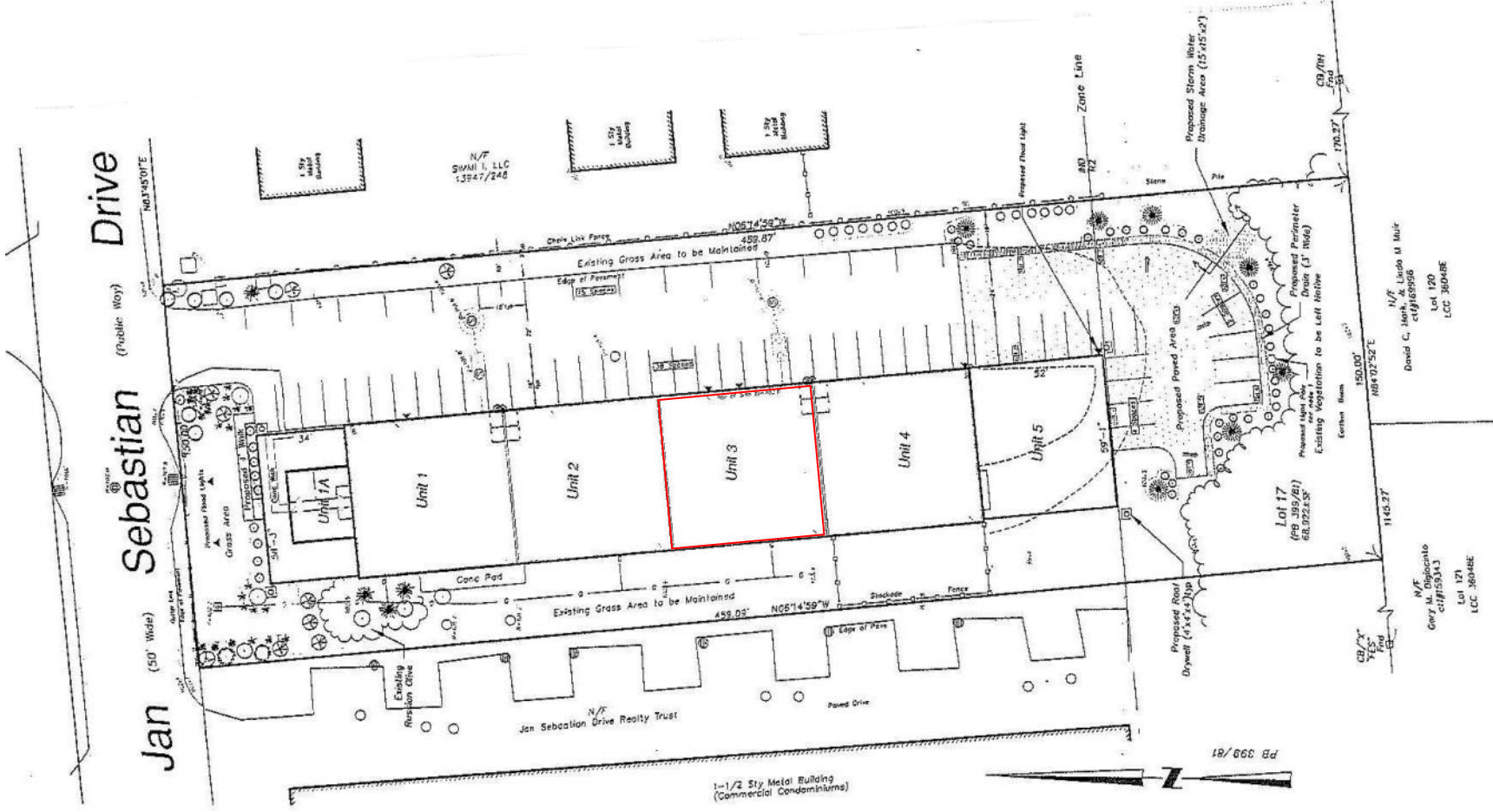
Commercial  
**Realty Advisors**  
[www.comrealty.net](http://www.comrealty.net)

**Commercial Realty Advisors, Inc.**

Real Estate Investment Brokerage Company

222 West Main Street  
Hyannis, Massachusetts 02601  
Tel: 508.862.9000  
Fax: 508.862.9200

# 10 JAN SEBASTIAN DRIVE FLOOR PLAN



This information has been secured from sources we believe to be reliable, but we make no representation or warranties, expressed or implied, as to the accuracy of the information. Referenced square footage and acreage and sketched outlines of the property are approximate. Buyer must verify all the information and bears all the risk for any inaccuracies.