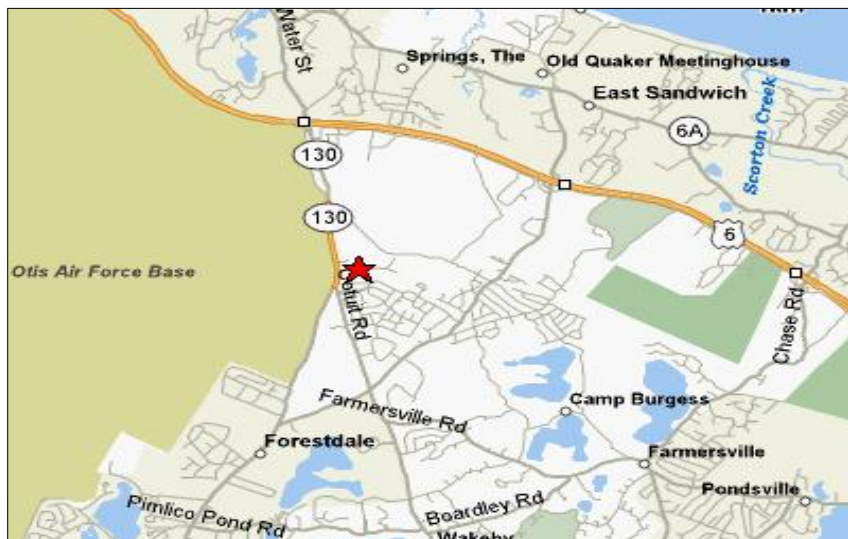


INDUSTRIAL BUSINESS BAY FOR SALE

11 JAN SEBASTIAN DRIVE, UNIT 5, SANDWICH, MA



ASKING: \$199,000

PROPERTY HIGHLIGHTS:

- 2,000 +/- sq ft, Approximately 1,000 sq ft shop space and 1,000 sq ft office space
- Condo Fees approximately \$160/quarter
- RE Taxes: \$1,694 (2011)
- Private septic, natural gas on site (avg.: \$145/month), electric (avg.: \$110/month)
- Approximately 4-5 parking spaces; 2 in front and 2-3 (depending on size of vehicles) against grassy area.
- Approximately one mile from Route 6
- Five minutes from the Sagamore Bridge
- Easy access to lighted intersection at Route 130

For more information about this opportunity contact:

Kevin Pepe

508.862.9000 Ext. 105
Mobile: 508.962.5022
kpepe@comrealty.net

Commercial
Realty Advisors
www.comrealty.net

Commercial Realty Advisors, Inc.

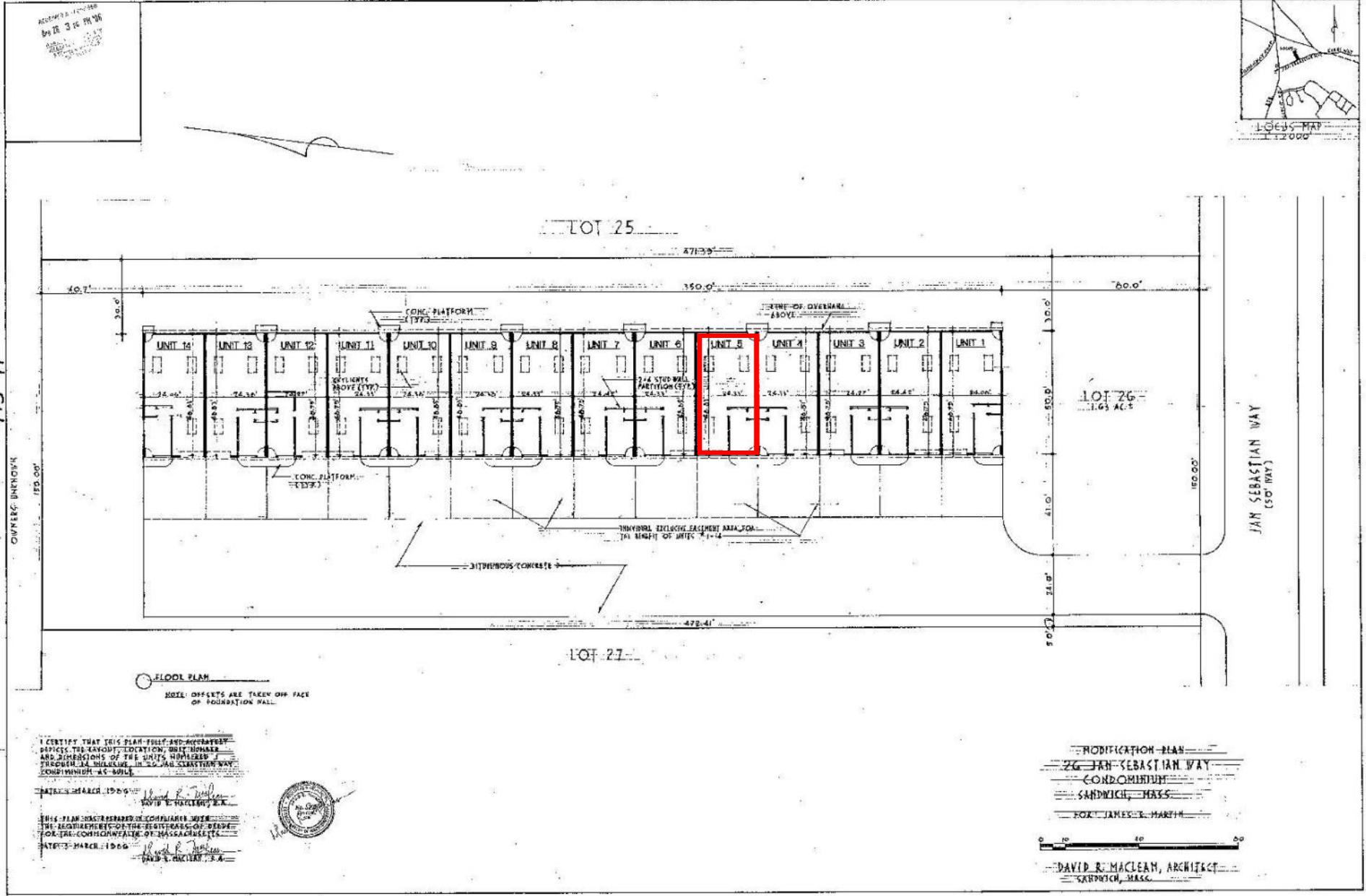
Real Estate Investment Brokerage Company

222 West Main Street
Hyannis, Massachusetts 02601
Tel: 508.862.9000
Fax: 508.862.9200

This information has been secured from sources we believe to be reliable, but we make no representation or warranties, expressed or implied, as to the accuracy of the information. Referenced square footage and acreage and sketched outlines of the property are approximate. Buyer must verify all the information and bears all the risk for any inaccuracies.

11 JAN SEBASTIAN DRIVE, UNIT 5, SANDWICH, MA

BOOK 415 PAGE 91



This information has been secured from sources we believe to be reliable, but we make no representation or warranties, expressed or implied, as to the accuracy of the information. Referenced square footage and acreage and sketched outlines of the property are approximate. Buyer must verify all the information and bears all the risk for any inaccuracies.