

For Sale : 750+/- Sq. Ft. First Floor Office Condominium

17 Brittany's Way, Eastham, MA



- Gas Heat, Central A/C
- Open workspace w/ 2 offices, lower level storage
- Recent construction, wired for security
- Network capable
- Signage on Route 6
- Ample Parking
- 2011 RE Taxes: \$678
- Condo Fee: \$100/Month

Offered at
\$118,000



Commercial
Realty Advisors

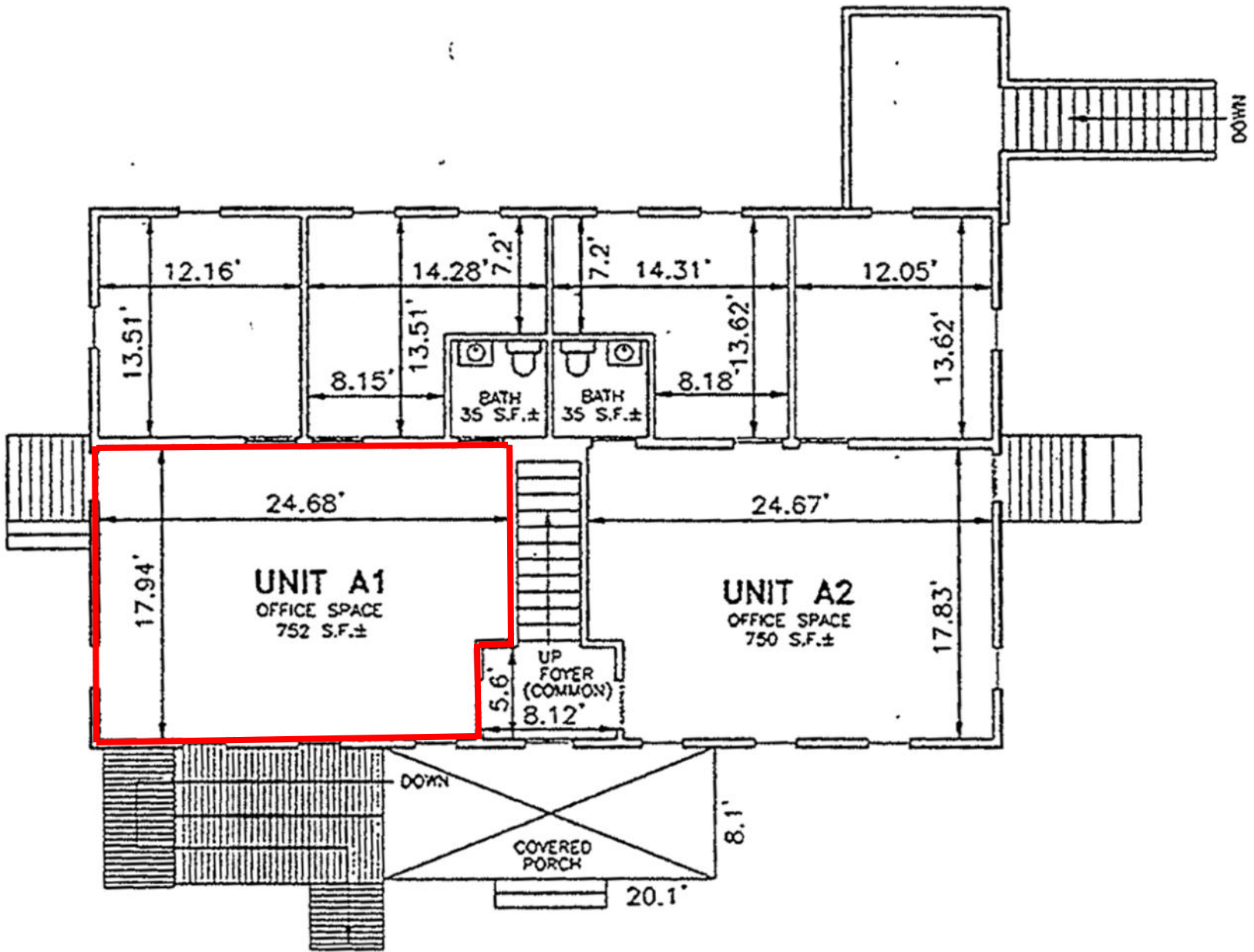
Contact Brad Kuhrtz

**Commercial Realty
Advisors, Inc.**

*Real Estate, Investment,
Brokerage Company*

222 West Main Street
Hyannis, MA 02601
508-862-9000 ext. 118
bkuhrtz@comrealty.net
www.comrealty.net

This information has been secured from sources we believe to be reliable, but we make no representation or warranties, expressed or implied, as to the accuracy of the information. Referenced square footage and acreage and sketched outlines of the property are approximate. Buyer must verify all the information and bears all the risk for any inaccuracies. Brokers represent the Sellers of this project unless otherwise disclosed



FIRST FLOOR
 BUILDING "A"