

2,200+/- SQ. FT. PROFESSIONAL OFFICE SPACE

Shellback Place, Route 28, Mashpee, MA



- 1,400+/- Sq. Ft on 1st floor, 800+/- on lower level
- "Turnkey"; Ready for immediate occupancy
- 2 large executive offices, conference room, two private bathrooms, kitchenette, and large reception area
- Ample storage areas
- Secure building with alarms and motion detectors
- A/C, Independently metered services.

Asking \$1,800/month (N-N-N)



For more information about this opportunity contact:

Jeff Eklund

508.862.9000 Ext. 115

Mobile: 508.280.2319

JEKLUND@comrealty.net

Commercial
Realty Advisors
www.comrealty.net

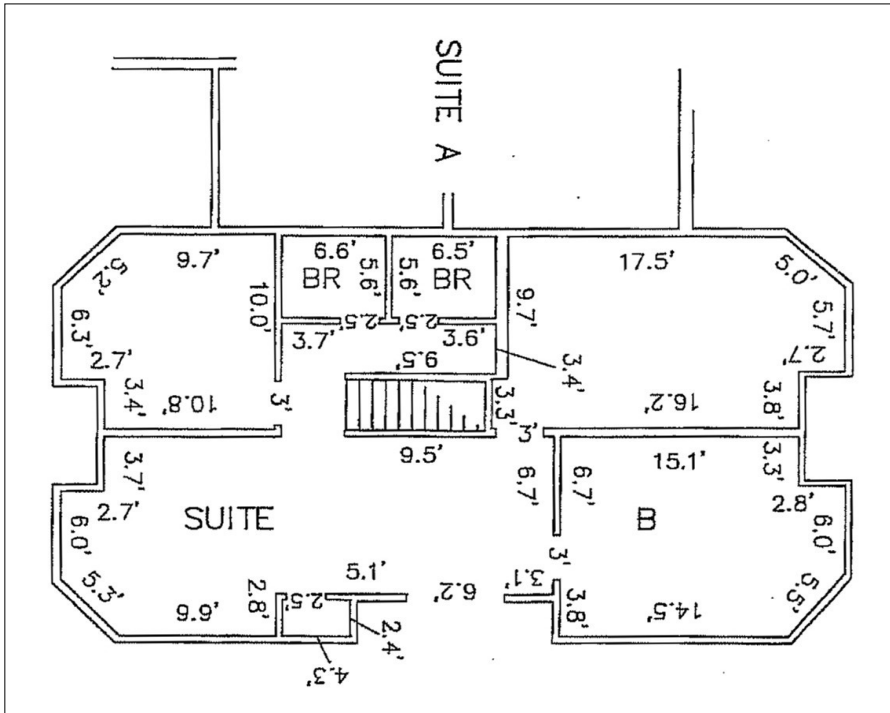
Commercial Realty Advisors, Inc.

Real Estate Investment Brokerage Company

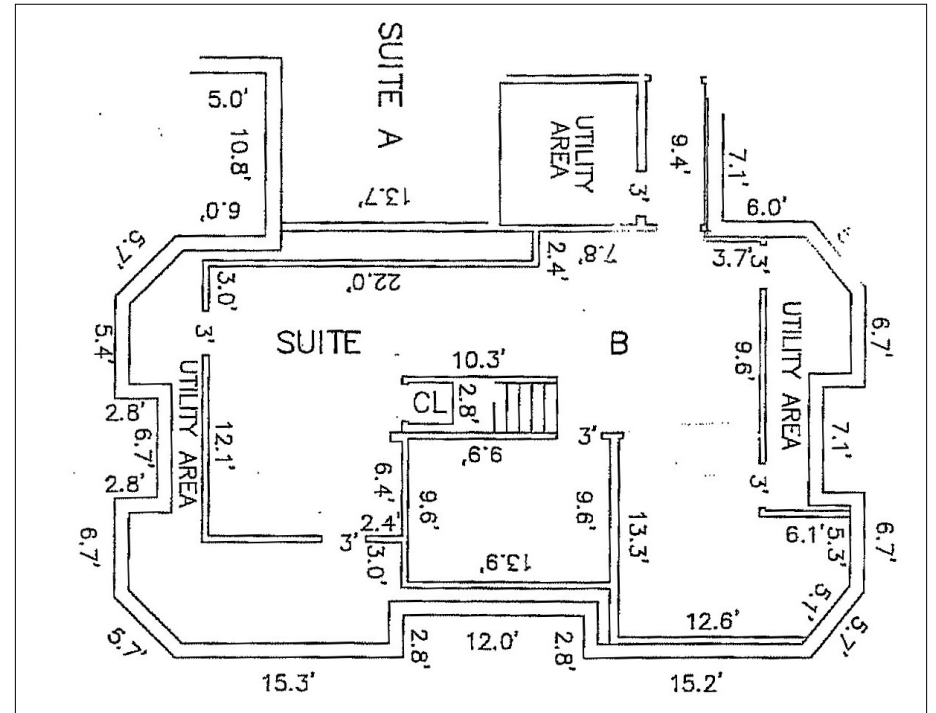
*222 West Main Street
Hyannis, Massachusetts 02601*

Tel: 508.862.9000

Fax: 508.862.9200



First Floor Plan



Lower Level Plan