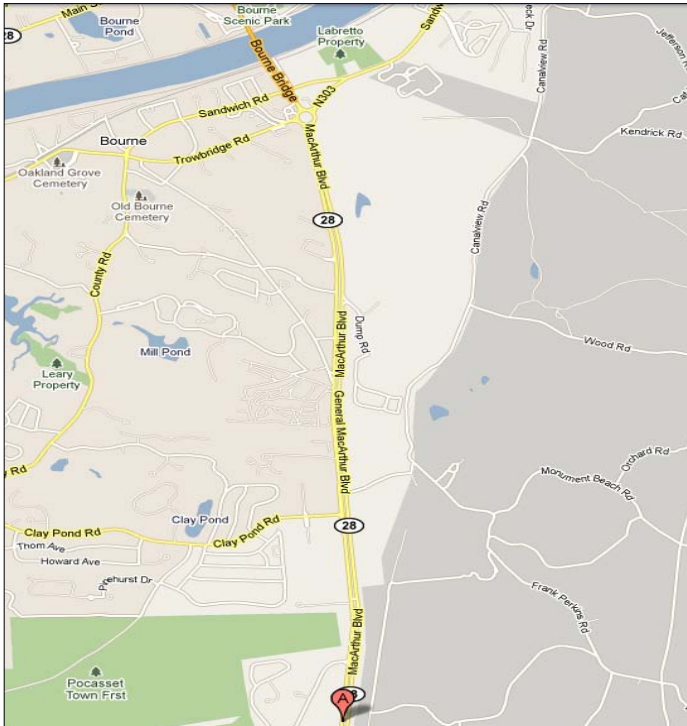


PRIVATE OFFICE IN A HIGHLY VISIBLE LOCATION

552 MACARTHUR BOULEVARD, BOURNE



- Recently Renovated, Private Entrance
- Approximately 1,960 Sq. Ft., Sub dividable
- Visible Signage on Route 28/Macarthur Boulevard
- Annual Average Traffic Count of 30,270 cars/day.



Asking: \$2,300/Month + Utilities

For more information about this opportunity contact:

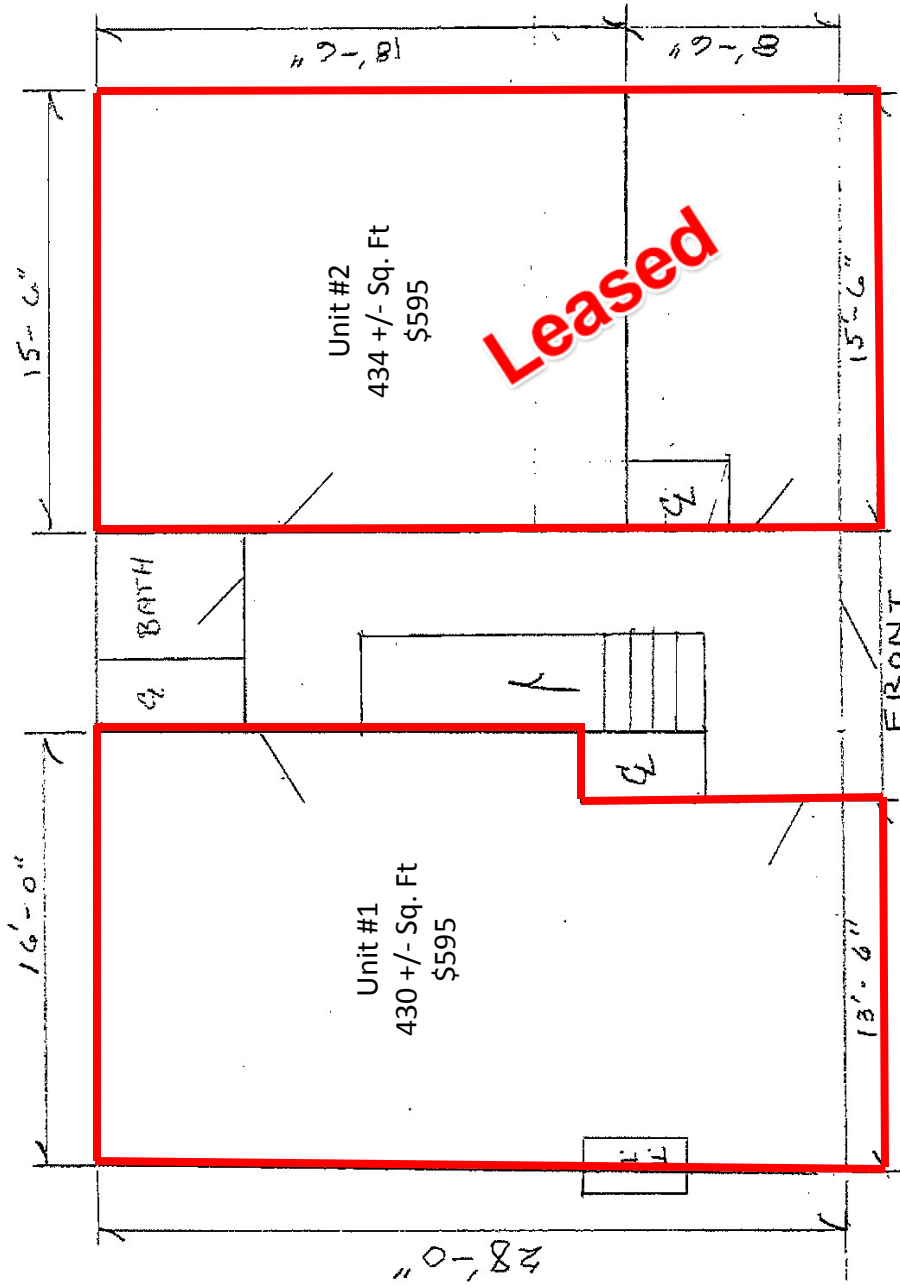
Jeff Eklund

508.862.9000 Ext. 115
Mobile: 508.280.2319
jeklund@comrealty.net

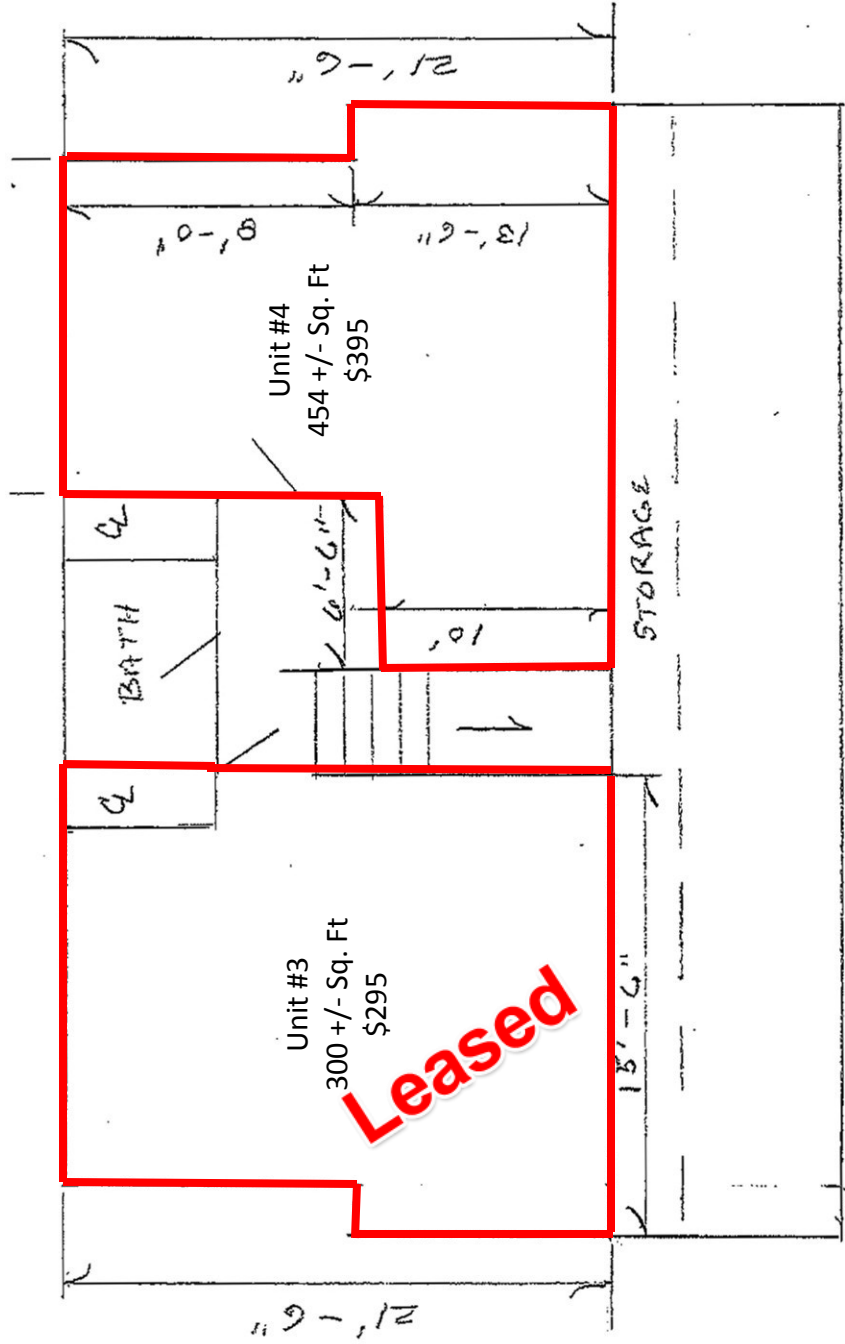
Commercial
Realty Advisors
www.comrealty.net

Commercial Realty Advisors, Inc.
Real Estate Investment Brokerage Company

222 West Main Street
Hyannis, Massachusetts 02601
Tel: 508.862.9000
Fax: 508.862.9200



FIRST FLOOR



SECOND FLOOR

