

# INDUSTRIAL BUSINESS BAY FOR SALE

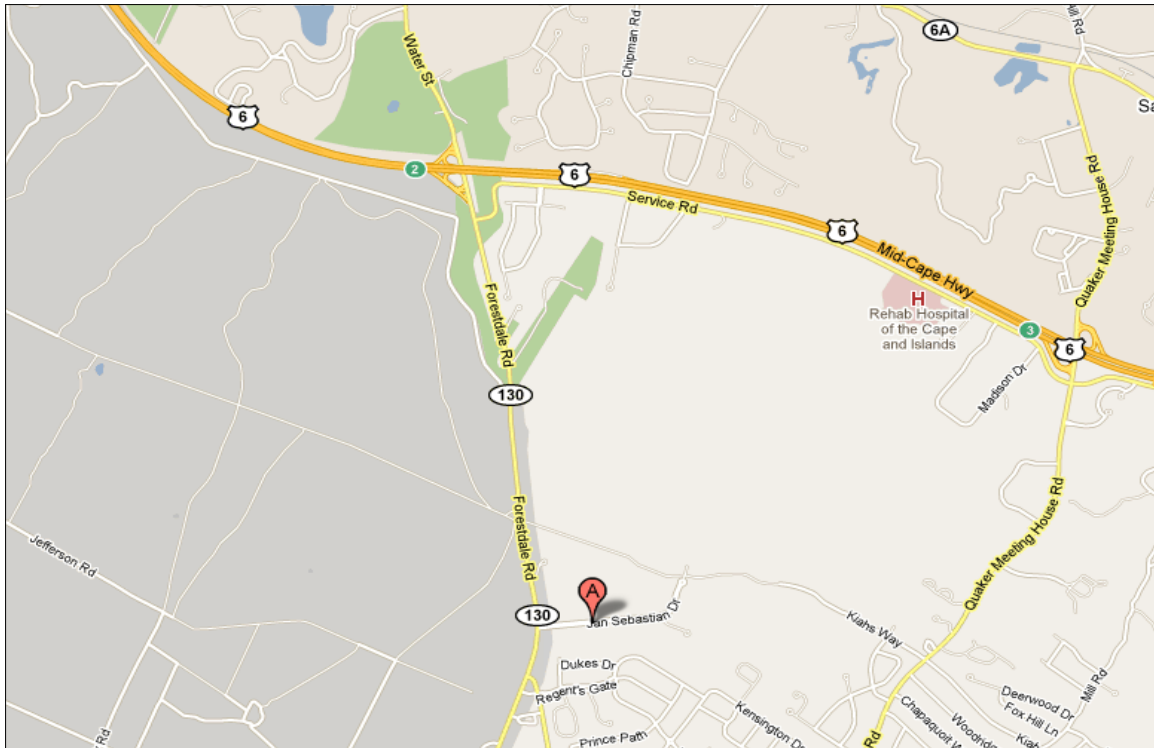
## 11 JAN SEBASTIAN DRIVE, UNIT 1, SANDWICH, MA



**ASKING: \$199,900**

### *PROPERTY HIGHLIGHTS:*

- 2,000 +/- Square Feet
- Approximately one mile from Route 6
- Five minutes from the Sagamore Bridge
- Easy access to lighted intersection at Route 130



For more information about this opportunity contact:

**Kevin Pepe**

508.862.9000 Ext. 105  
Mobile: 508.962.5022  
kpepe@comrealty.net

Commercial  
**Realty Advisors**  
[www.comrealty.net](http://www.comrealty.net)

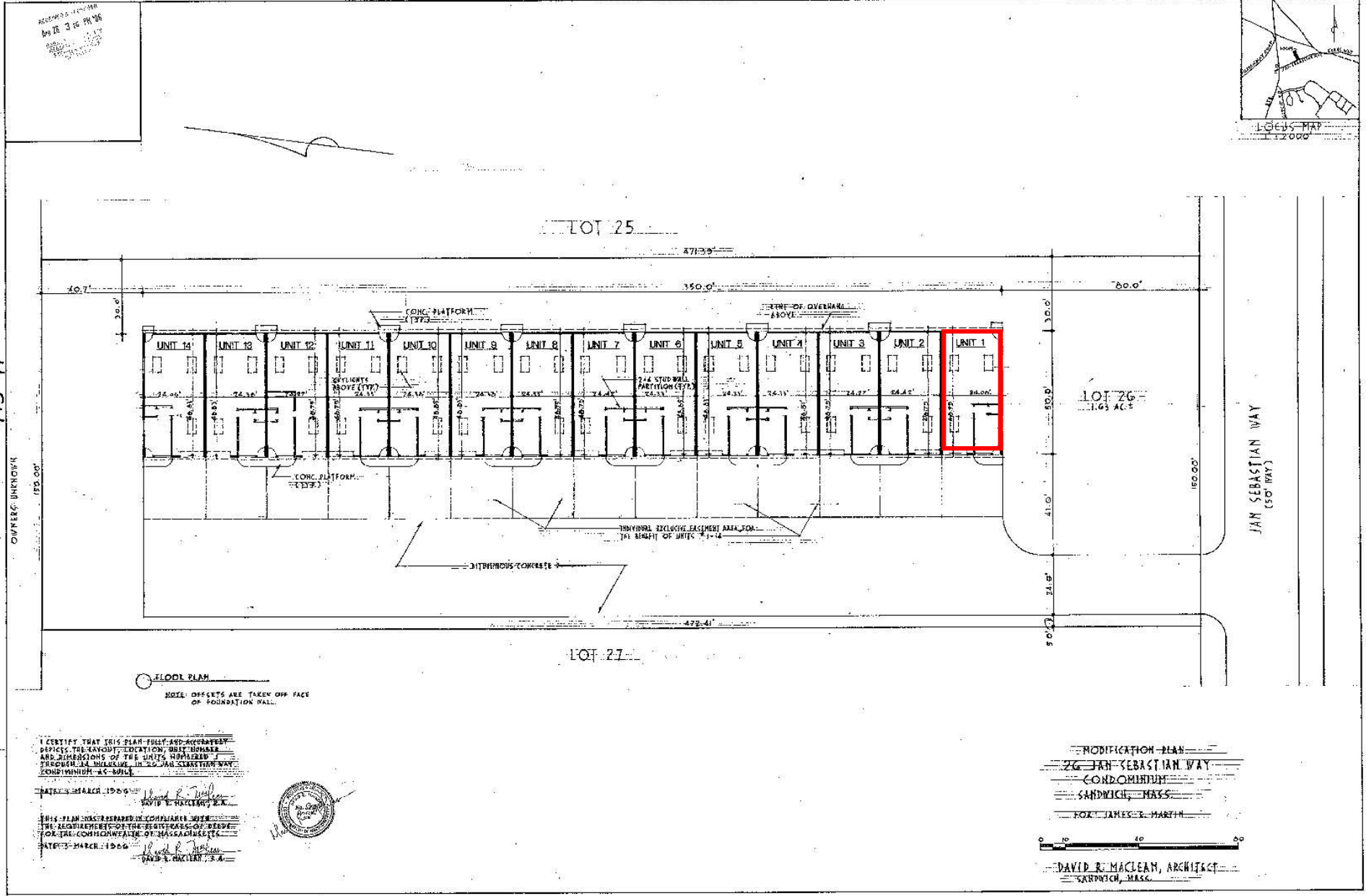
**Commercial Realty Advisors, Inc.**  
Real Estate Investment Brokerage Company

222 West Main Street  
Hyannis, Massachusetts 02601  
Tel: 508.862.9000  
Fax: 508.862.9200

This information has been secured from sources we believe to be reliable, but we make no representation or warranties, expressed or implied, as to the accuracy of the information. Referenced square footage and acreage and sketched outlines of the property are approximate. Buyer must verify all the information and bears all the risk for any inaccuracies.

# 11 JAN SEBASTIAN DRIVE, UNIT 5, SANDWICH, MA

BOOK 415 PAGE 91



415-91

OWNER'S UNKNOWN

I CERTIFY THAT THIS PLAN SHOWS AND REPRESENTS ACCURATELY THE LOCATION, UNIT NUMBER AND DIMENSIONS OF THE UNITS NUMBERED THEREON AS SHOWN IN THE JAN SEBASTIAN WAY CONDOMINIUM AS BUILT.

MARCH 1986

DAVID R. MACLEAN, ARCHITECT

THIS PLAN WAS PREPARED IN COMPLIANCE WITH THE REQUIREMENTS OF THE REGISTRY OF DEEDS FOR THE COMMONWEALTH OF MASSACHUSETTS.

MARCH 1986

DAVID R. MACLEAN, ARCHITECT



MODIFICATION PLAN

26 JAN SEBASTIAN WAY

CONDOMINIUM

SANDWICH, MASS

FOR: JAMES E. MARTIN

0 20 40 60

DAVID R. MACLEAN, ARCHITECT

SANDWICH, MASS.