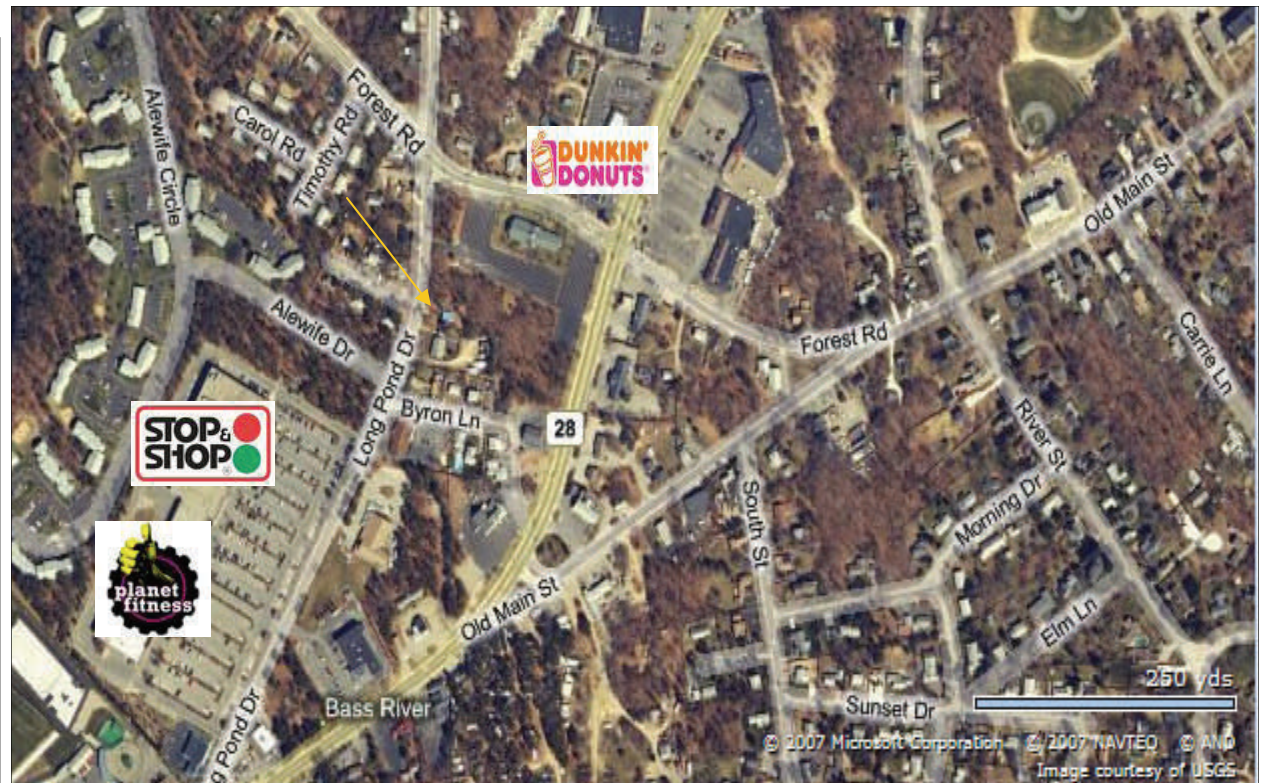
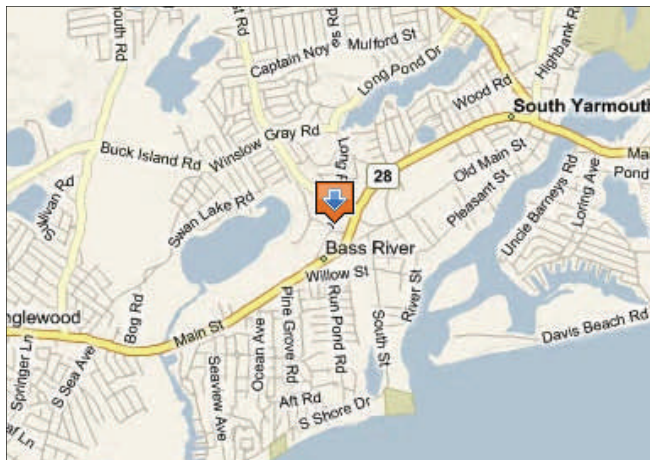


Possible Office Conversion Approved Plans

74 Long Pond Drive
Yarmouth, Massachusetts



PROPERTY HIGHLIGHTS:

- 1,160 SQUARE FEET APPROVED BUILDING PLAN
- 610 SQUARE FEET ON FIRST FLOOR, 550 SQUARE FEET ON SECOND FLOOR
- WALKING DISTANCE TO MANY AMENITIES AT THE STOP AND SHOP PLAZA
- EASY ACCESS TO LIGHTED INTERSECTION ON ROUTE 28
- PERFECT FOR A SMALL PROFESSIONAL USER
- SMALL DWELLING CURRENTLY ON SITE
- CURRENTLY ASSESSED AT \$174,200

*For more information about this
opportunity please contact*

Matt Kais

Commercial Realty Advisors, Inc.

*Exclusively Listed with
Commercial Realty Advisors, Inc.*

Offered at: \$ 169,900

Commercial Realty Advisors, Inc.
Real Estate Investment Brokerage Company

*222 West Main Street
Hyannis, Massachusetts 02601
Tel: 508-862-9000 ext. 103
Fax: 508-862-9200*

www.comrealty.net

**Commercial
Realty Advisors**