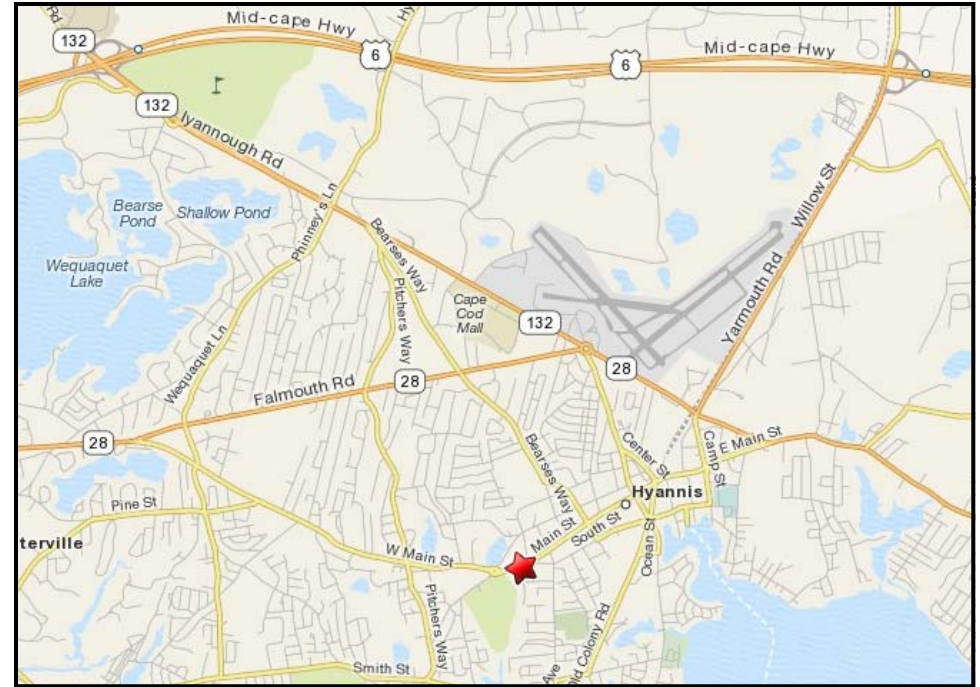
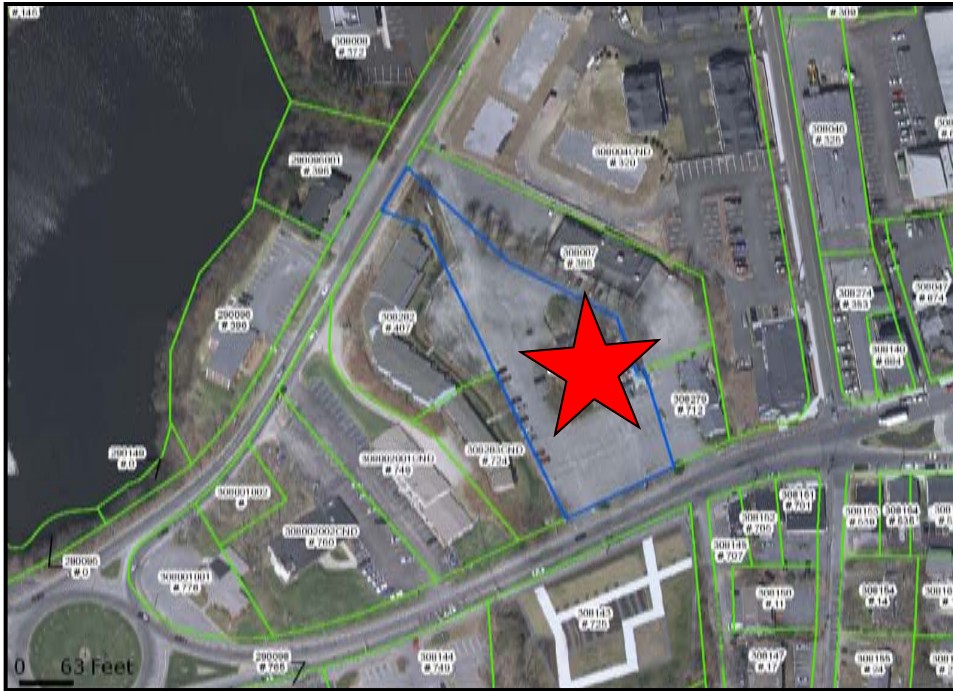


# 1.13 ACRE LOT FOR SALE OR LEASE 720 MAIN STREET, HYANNIS, MA

Commercial  
Realty Advisors



## PROPERTY HIGHLIGHTS:

- RARE OPPORTUNITY TO OWN 1.13 ACRES IN DOWNTOWN HYANNIS
- FRONTAGE ON MAIN STREET AND NORTH STREET

**OFFERED AT: \$995,000**

For more information about this opportunity contact:

**John E. Ciluzzi**

508.862.9000 Ext. 101  
jciluzzi@comrealty.net

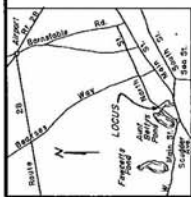
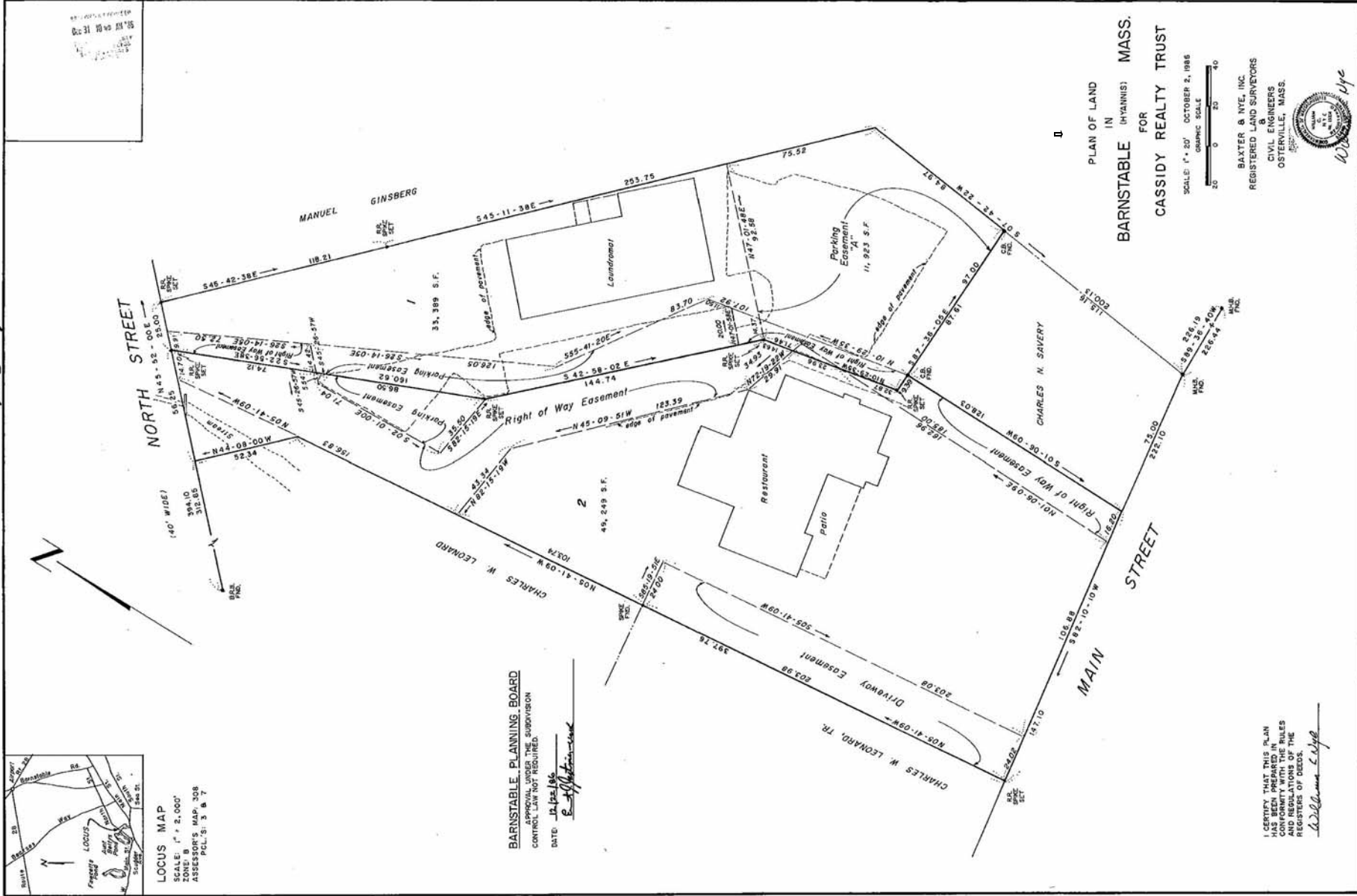
Commercial  
Realty Advisors  
[www.comrealty.net](http://www.comrealty.net)

**Commercial Realty Advisors, Inc.**  
Real Estate Investment Brokerage Company

222 West Main Street  
Hyannis, Massachusetts 02601  
Tel: 508.862.9000  
Fax: 508.862.9200

18166

5428-9



LOCUS MAP  
 SCALE: 1" = 2,000'  
 ASSESSOR'S MAP, 308  
 PCL'S: 3 & 7

**BARNSTABLE PLANNING BOARD**  
 APPROVAL UNDER THE SUBDIVISION  
 CONTROL LAW NOT REQUIRED.  
 DATE: 12/22/16  
*[Signature]*

PLAN OF LAND  
 IN  
**BARNSTABLE (HYANNIS) MASS.**  
 FOR  
**CASSIDY REALTY TRUST**

SCALE: 1" = 20'  
 OCTOBER 2, 1986  
 GRAPHIC SCALE

BAXTER & NYE, INC.  
 REGISTERED LAND SURVEYORS  
 CIVIL ENGINEERS  
 OSTERVILLE, MASS.



I CERTIFY THAT THIS PLAN  
 WAS PREPARED IN ACCORDANCE WITH THE RULES  
 AND REGULATIONS OF THE  
 REGISTER OF DEEDS.  
*[Signature]*

4-29184

This information has been secured from sources we believe to be reliable, but we make no representation or warranties, expressed or implied, as to the accuracy of the information. Referenced square footage and acreage and sketched outlines of the property are approximate. Buyer must verify all the information and bears all the risk for any inaccuracies.