

HIGH BAY INDUSTRIAL UNIT FOR LEASE

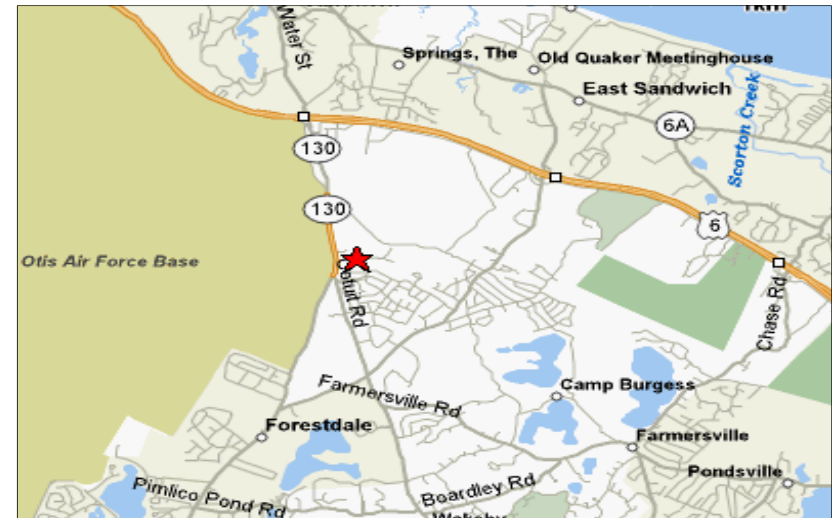
17 JAN SEBASTIAN DRIVE, UNIT 4 & 5, SANDWICH, MA



Asking:
\$1,650 Per Month
Gross

PROPERTY HIGHLIGHTS:

- Approximately 2,000 square feet on ground level floor
- Approximately 2,000 square feet on second floor
- Two 12' x 14' overhead bay doors
- Forced hot air gas fired heating unit
- 6 assigned parking spaces
- One full bath and one half bath
- Approximately one mile from Route 6
- Five minutes from the Sagamore Bridge
- Easy access to lighted intersection at Route 130



For more information about this opportunity contact:

Kevin Pepe

508.862.9000 Ext. 105
Mobile: 508.962.5022
kpepe@comrealty.net

Commercial
Realty Advisors
www.comrealty.net

Commercial Realty Advisors, Inc.

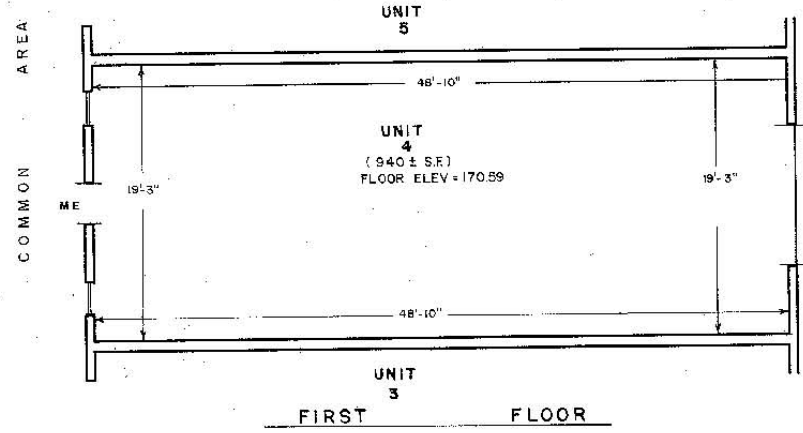
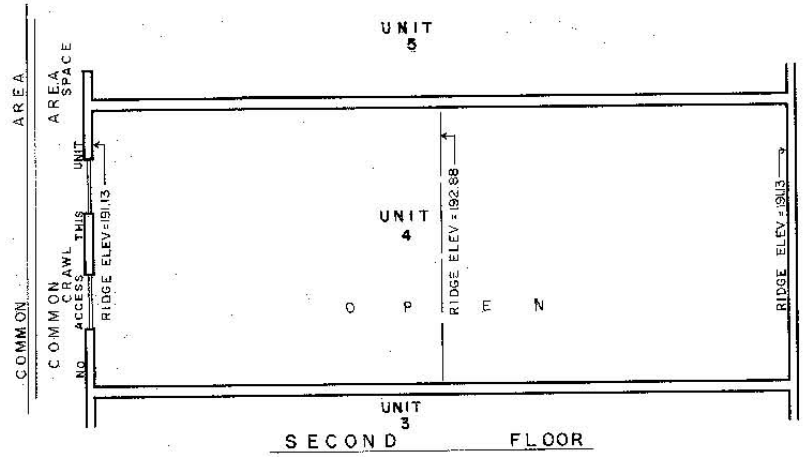
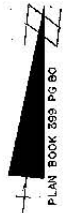
Real Estate Investment Brokerage Company

222 West Main Street
Hyannis, Massachusetts 02601
Tel: 508.862.9000
Fax: 508.862.9200

17 JAN SEBASTIAN DRIVE, UNIT 4 & 5, SANDWICH, MA

BOOK 435 PAGE 50

DEC 28 4 37 AM '88



LEGEND
 ME MAIN ENTRANCE
 ELEV ELEVATION

I Certify that this plan fully and accurately depicts the layout, location, unit number and dimensions of the unit numbered 4 in the building as built.

6/14/88 Mary Ellen Strout
 Date Registered Land Surveyor

I Certify that this plan was made in accordance with the rules and regulations of the Registers of Deeds.

6/14/88 Mary Ellen Strout
 Date Registered Land Surveyor

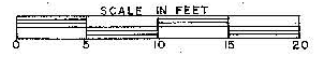
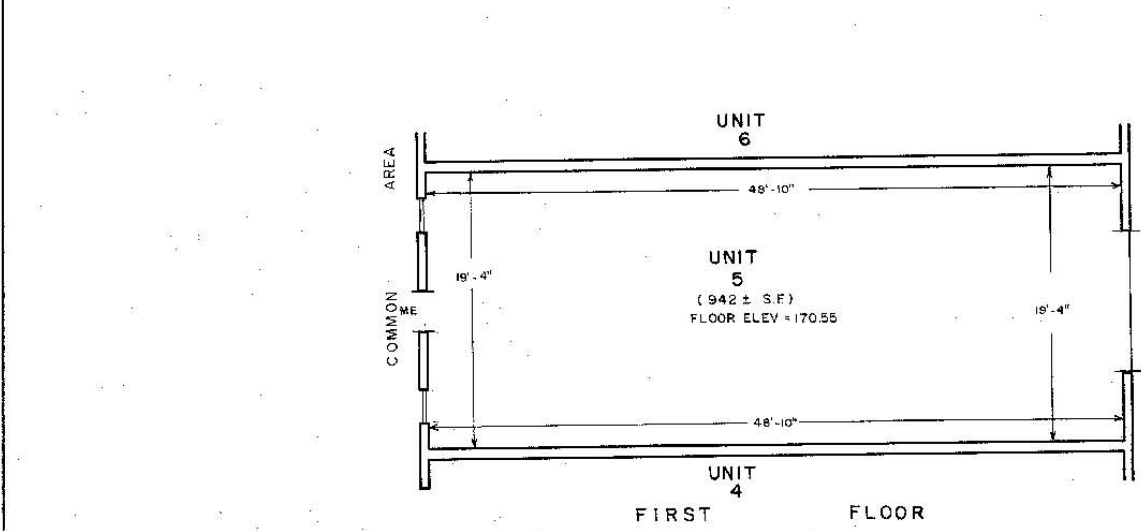
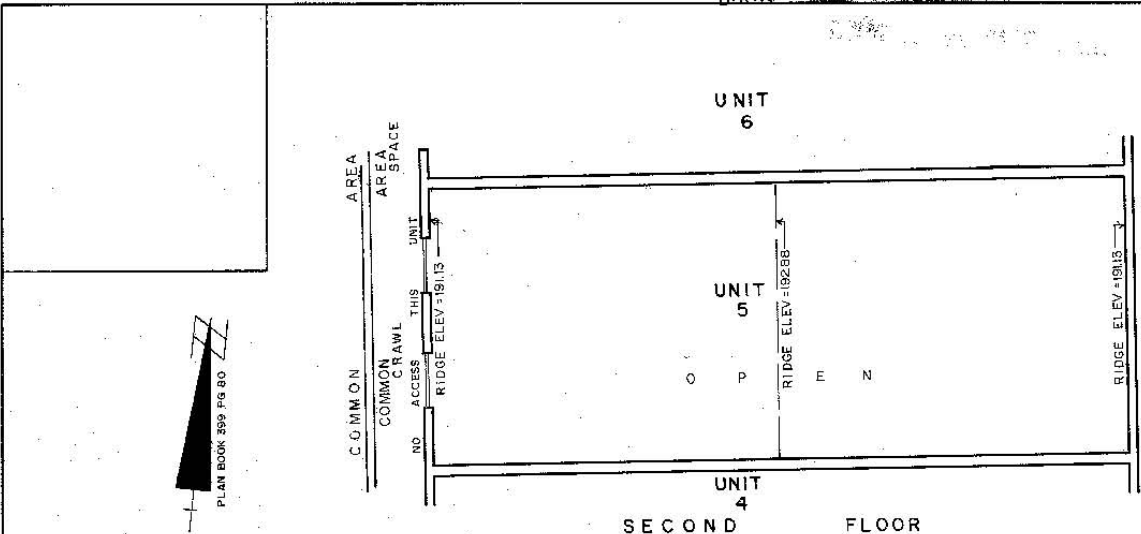
DATE	DESCRIPTION	Drawn	Checked
REVISIONS			
UNIT PLAN FOR POLCARO CONSTRUCTION CO., INC. OF 17 JAN SEBASTIAN CONDOMINIUM IN SANDWICH MASS.			
SCALE: 3/16" = 1'-0"	DATE: JUNE 14, 1988		
holmes and mcgrath, inc. civil engineers and land surveyors 200 main street falmouth, ma. 02540			
DRAWN: EJP	CHECKED: <u>MES</u>		
JOB NO: 86056	DWG NO: 38-4-4*		

This information has been secured from sources we believe to be reliable, but we make no representation or warranties, expressed or implied, as to the accuracy of the information. Referenced square footage and acreage and sketched outlines of the property are approximate. Buyer must verify all the information and bears all the risk for any inaccuracies.

17 JAN SEBASTIAN DRIVE, UNIT 4 & 5, SANDWICH, MA

BOOK 455 PAGE 51

RECORDED & RECEIVED
DEC 28 43 AM '88
REGISTERED LAND SURVEYOR
MAY ALLEN STRAITS



LEGEND
ME MAIN ENTRANCE
ELEV ELEVATION

I Certify that this plan fully and accurately depicts the layout, location, unit number and dimensions of the unit numbered 5 in the building as built.

6/14/88 Date May Allen Straits Registered Land Surveyor

I Certify that this plan was made in accordance with the rules and regulations of the Registers of Deeds.

6/14/88 Date May Allen Straits Registered Land Surveyor

DATE	DESCRIPTION	Drawn	Checked
REVISIONS			
UNIT PLAN FOR POLCARO CONSTRUCTION CO., INC. OF 17 JAN SEBASTIAN WAY CONDOMINIUM IN SANDWICH MASS.			
SCALE: 3/16" = 1'-0"	DATE: JUNE 14, 1988		
holmes and mcgrath, inc. civil engineers and land surveyors 200 main street falmouth, ma. 02540			
DRAWN: EJP	CHECKED: HEJ		
JOB NO: 88058	DWG NO: 38-4-4 ³		

This information has been secured from sources we believe to be reliable, but we make no representation or warranties, expressed or implied, as to the accuracy of the information. Referenced square footage and acreage and sketched outlines of the property are approximate. Buyer must verify all the information and bears all the risk for any inaccuracies.