

General Commercial Building Available for Acquisition

600 Main St., Rt. 28, Harwichport , MA



PROPERTY HIGHLIGHTS:

- 4,500 Sq. Ft TOTAL AREA
- LOT SIZE: 0.61 ACRES
- EXCELLENT PARKING
- HIGH VISIBILITY CORNER LOCATION
- ON MAIN EAST-WEST CAPE COD ROUTE
- CURRENT CONFIGURATION: RESTAURANT - CATERING, READY FOR REMODEL OR CONTINUED USE



Asking: \$16.50/Sq. Ft. NNN
For more information about this opportunity please contact Commercial Realty Advisors, Inc.

*Exclusively Listed with
Commercial Realty Advisors, Inc.*

Commercial Realty Advisors, Inc.
Real Estate Investment Brokerage Company

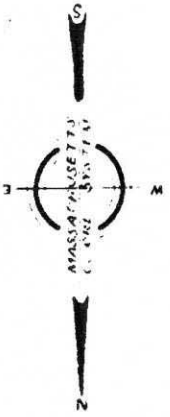
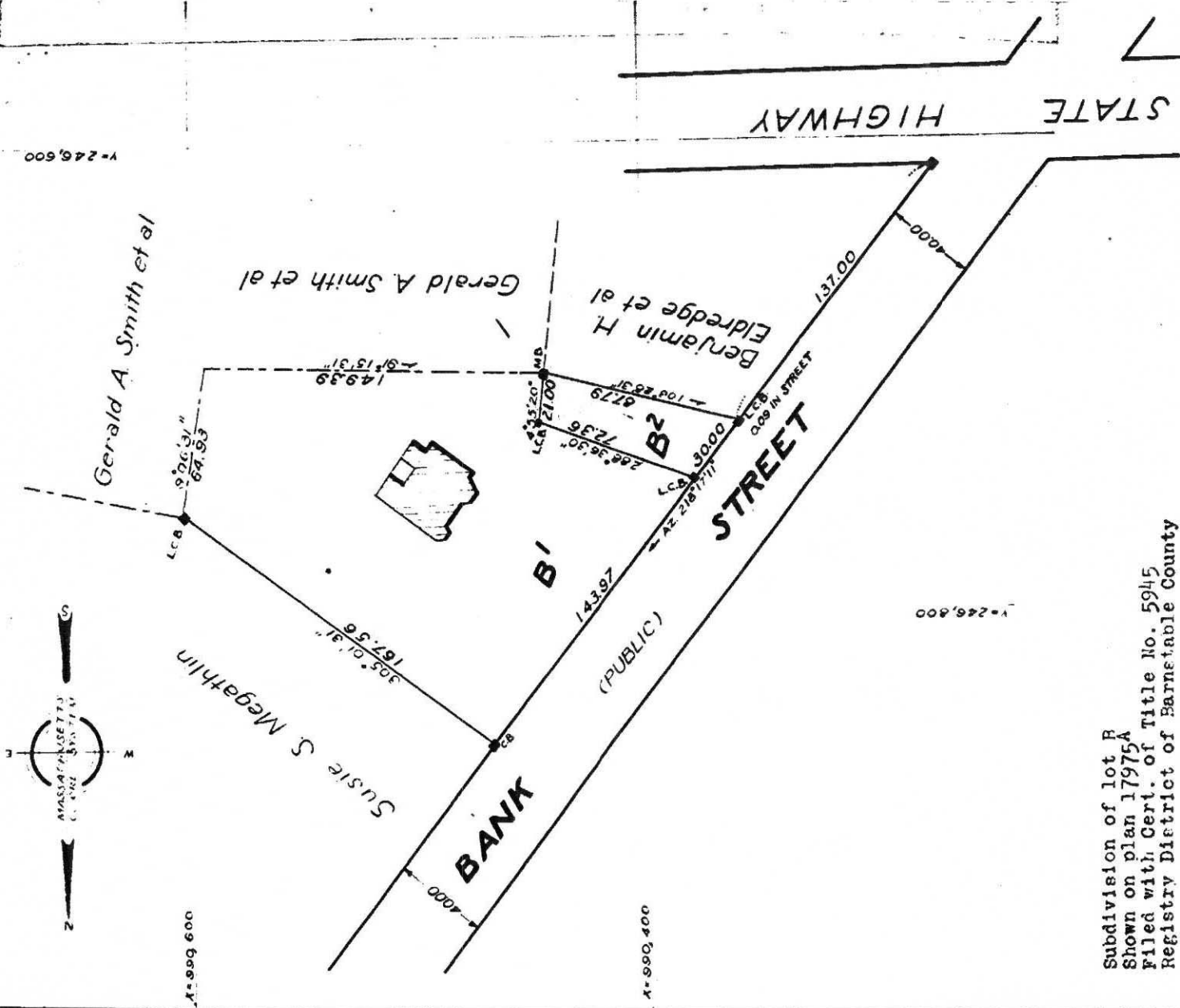
1600 Falmouth Road, Suite 40
Centerville, Massachusetts 02632
Tel: 508-862-9000
Fax: 508-862-9200

17975B

SUBDIVISION PLAN OF LAND IN HARWICH

March 25, 1947

Whitney & Bassett, Engineers



Subdivision of lot B
 Shown on plan 17975A
 Filed with Cert. of Title No. 5945
 Registry District of Barnstable County

Separate certificates of title may be issued
 for lots B1 & B2 as shown hereon
 By the Court *Robert E. French*
 Recorder.
 MAR. 28, 1947

Copy of part of plan
 filed in
 LAND REGISTRATION OFFICE
 MAR. 28, 1947
 Scale of this plan 30 feet to an inch
 W T Fairclough, Engineer for Court